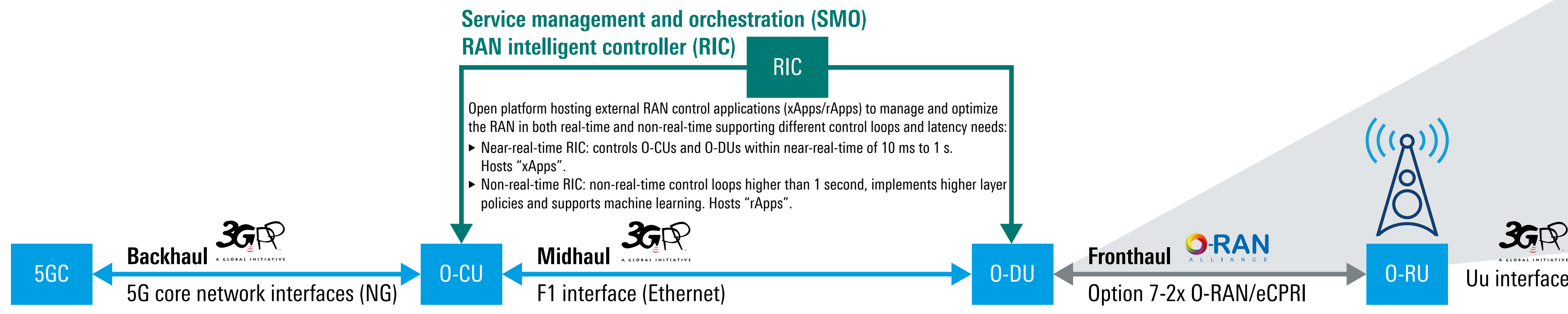


OPEN RAN NETWORK TOPOLOGY

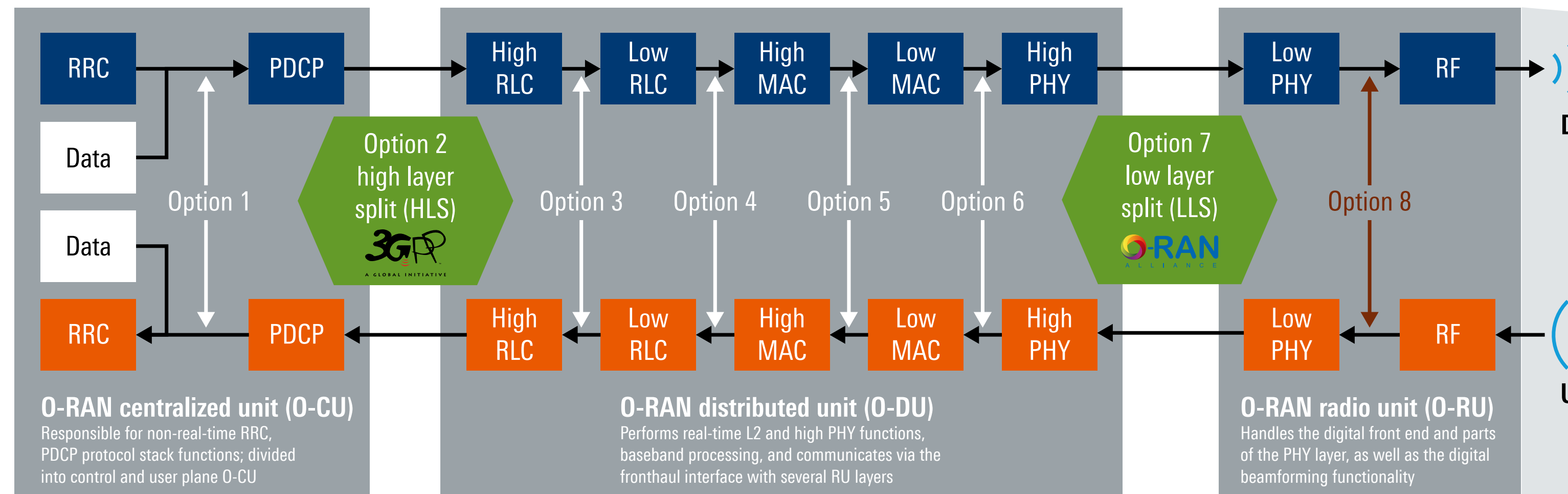
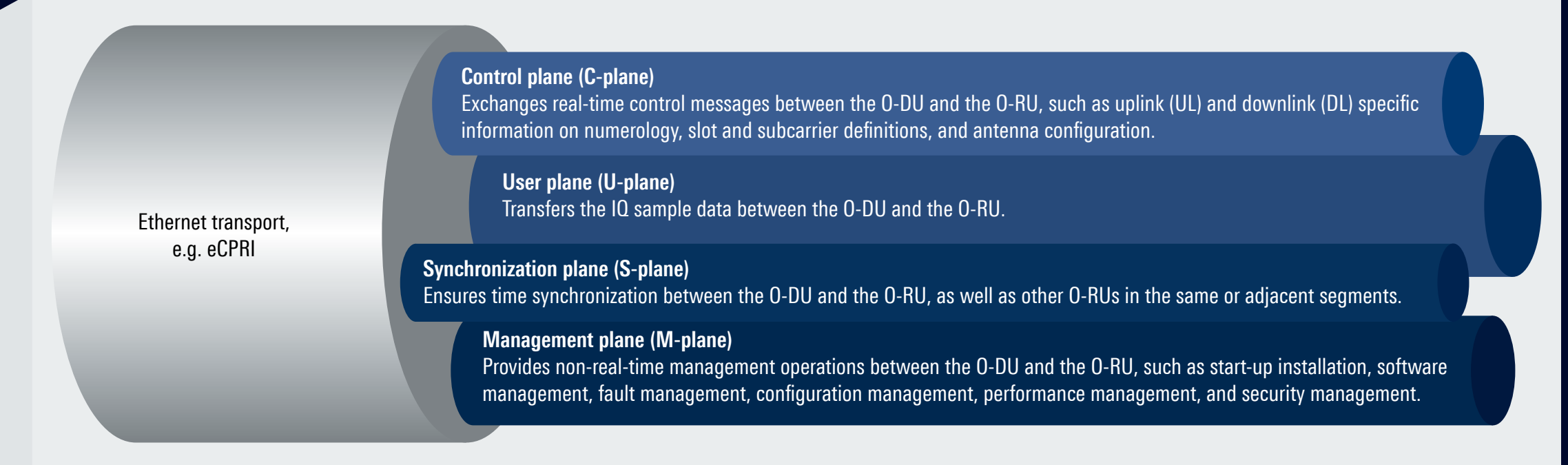
For more information:



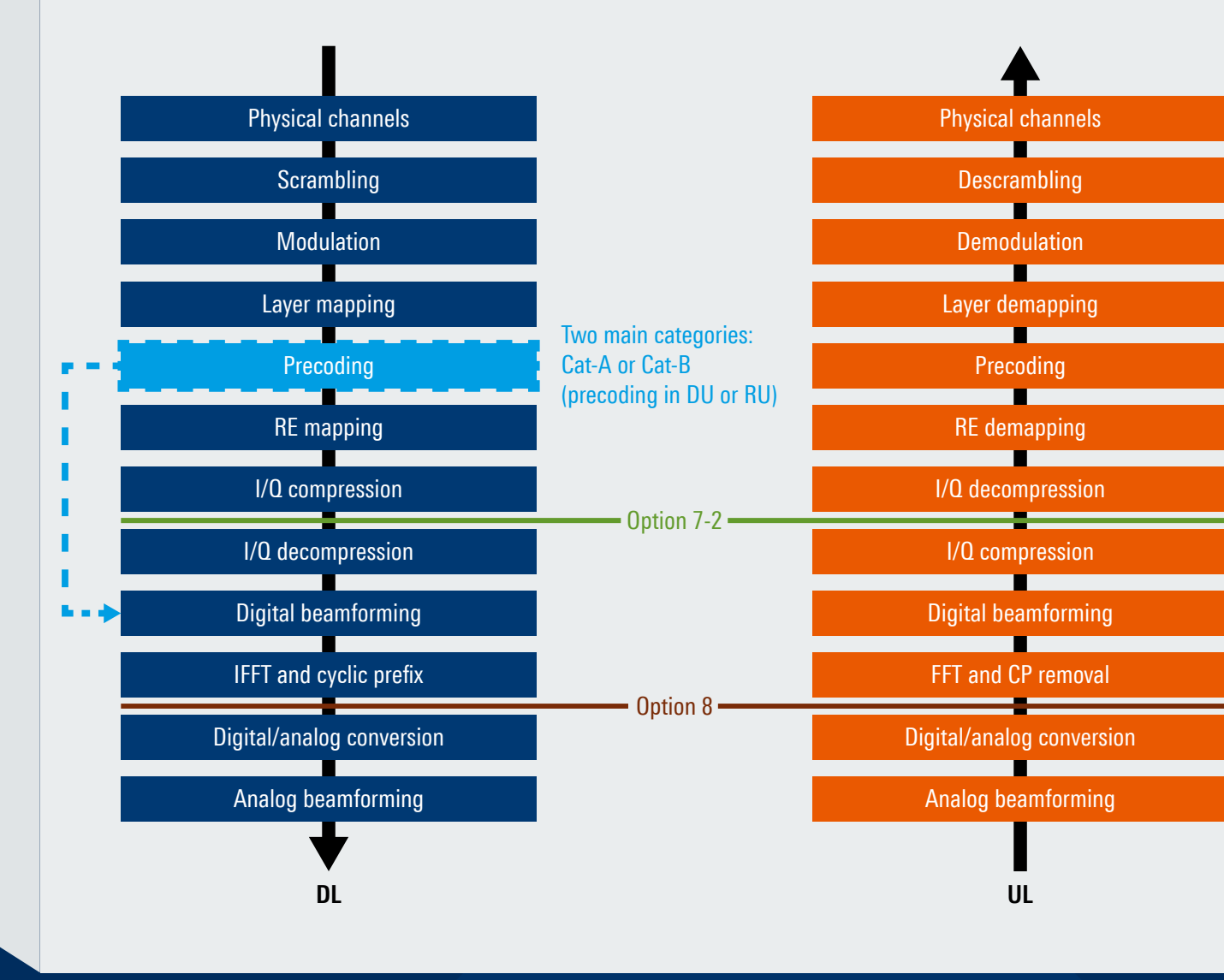
O-RAN disaggregated RAN architecture



O-RAN fronthaul interface



O-RAN initiative: Lower layer split (LLS)



O-RU categories based on supported functionality

- ▶ **Cat-A O-RU:** Precoding not supported (done at O-DU); up to 8T8R dual/triple band radios
- ▶ **Cat-B O-RU:** Precoding supported; up to 64T64R; massive MIMO supported in DL
- ▶ **Cat-B ULPI-A O-RU:** Massive MIMO supported in DL and UL; UL channel estimation/BFW calculation and UL equalizer at O-RU
- ▶ **Cat-B ULPI-B O-RU:** Massive MIMO supported in DL and UL; UL channel estimation/BFW calculation at O-RU

O-RAN WG4.IOT – O-RAN interoperability testing

O-RAN.TIFG.E2E-Test – O-RAN E2E testing verifies KPIs of system or O-RAN subsystem

Test solutions for O-RAN testing

O-RU conformance, regression and production testing

Integrated and fully automated O-RU test setup compliant to 3GPP TS 38.104/ETSI EN 301908-24 and O-RAN ALLIANCE WG4 fronthaul conformance specifications.



R&S[®]SMW200A (or R&S[®]SMBV100B) vector signal generator and R&S[®]FSW (or R&S[®]FSWA3000) signal and spectrum analyzer



PVT360A performance vector tester



VIAVI TM500 O-RU Tester and O-RU Test Manager Application



R&S[®]RT06 high-performance oscilloscope with R&S[®]VSE signal analysis software



R&S[®]NGx power supply



VIAVI TM500 O-RU Tester and O-RU Test Manager Application

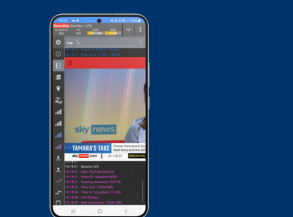
Network energy saving (NES)

Automated test solution to measure the energy consumption and efficiency of O-RU.

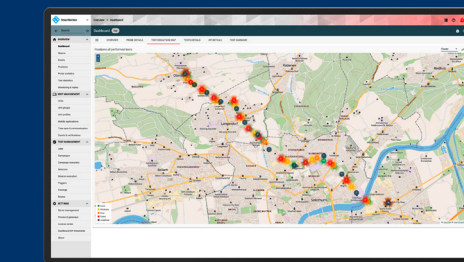
Field testing

O-RAN network performance evaluation and comparison.

O-RAN cell synchronization verification over the air.



QualiPoc Android



SmartAnalytics



R&S[®]5G Site Testing Solution

www.rohde-schwarz.com/wireless/o-ran

ROHDE & SCHWARZ

Make ideas real

