



**Hewlett Packard
Enterprise**

HPE Aruba Networking Solutions: An Introduction

ARCHITECT YOUR NETWORK FOR THE FUTURE



**Antonio Perez
gm@3av.us
3AV**

February 2024

Proven over 21 Years

aruba

a Hewlett Packard
Enterprise company

Founded: 2002, IPO: 2007
Part of HPE since May 2015

\$3B+ annual revenue run rate
"Biggest Small Company"

High margin business model
"Customer First, Customer Last"

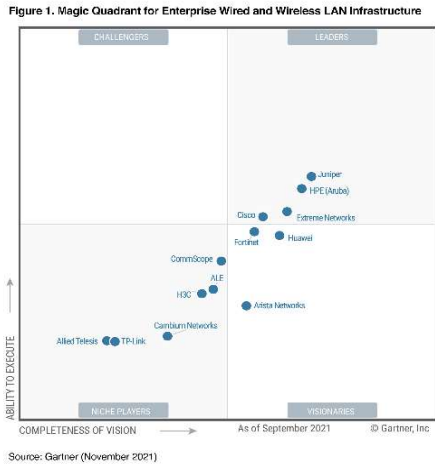
Home of 100K+ Mobility Engineers
@ Airheads Community



Analyst Validation Supports a **Powerful Leadership Narrative**

Gartner

Magic Quadrant



16th consecutive year as a Leader

Gartner

Critical Capabilities



Leading 3 of 5 Use Cases

FORRESTER

New Wave



The only vendor in the Leaders Quadrant

IDC
Analyze the Future

MarketScape



One of only two Leaders



HPE Aruba Networking Solutions **At a Glance**

Wireless Indoor / Outdoor Specialty



Aruba Central Cloud Edge Services Platform



Wired Edge to Data Center



Instant On SOHO / SMB Wired & Wireless



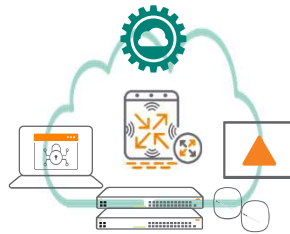
Gateways

Local & Remote

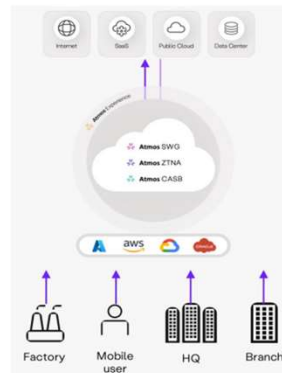
Branch & Teleworker



SD-WAN & Remote Branch & VPN



SASE Cloud Security



ClearPass Network Access Control



Experience Management



HPE Aruba Networking Access Points

WiFi 6/6E (802.11ax) with flexible architecture & deployment methodologies



AP 5xx Indoor Wi-Fi 6



503 Entry Level
500 Series Mid Density
510 Series High Density
530 Series Very High Density
550 Series Extreme Density
500H/R Series Hospitality/Remote

5xx Outdoor & Specialty Wi-Fi 6



518 Series High Density Ruggedized
560/560EX Mid-High Density Outdoor/HazLoc
570/570EX Extreme Density Outdoor/HazLoc
580/580EX Extreme Density Outdoor/HazLoc

AP 6xx Indoor Wi-Fi 6E – 6 Ghz



610 Series Mid Density Dual Radio
630 Series Mid-High Density Tri Radio
650 Series High-Extreme Density Tri Radio
600H/R Series Hospitality/Remote Dual Radio

6xx Outdoor Wi-Fi 6E 6 Ghz



670/670EX Outdoor/Pt-to-Pt HazLoc

- Controller or controller-less “Instant” topologies
- Internal or external, omni or directional antennas
- Cabling & power options
- IoT support with Zigbee, Bluetooth Low Energy
- Dynamic segmentation & secure guest access
- All part of Aruba ESP with Aruba Central

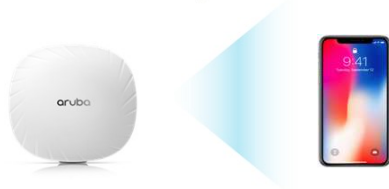


A Better **Wireless Experience**

ClientMatch & ARM (Adaptive Radio Management)

Predictable network-wide Wi-Fi performance

Intelligently steers devices to the best AP.
Reduces “Sticky” Client issues.



Air Match

Automated real-time RF management

Real-time channel & power assignment to support changing device density and enhanced roaming.



CERTIFIED Wi-Fi 6 SOLUTION



CONNECT FROM ANYWHERE



Intelligent Traffic Control with AppRF

Bandwidth can be allocated by app type

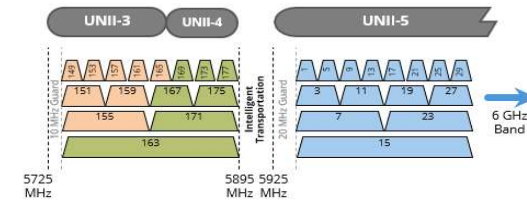
Allows configuration of application and application category policies within a given user role.



UTB (Ultra-Tri-Band) Filtering

Dynamic filtering between channels

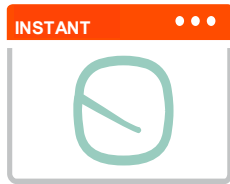
Enables additional channels when tri-band is in use (2.4GHz + 5GHz + 6GHz)



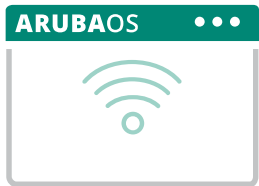
HPE Aruba Networking WLAN Gateways

Flexible Architecture & Deployment Methodologies

Do I need a gateway?

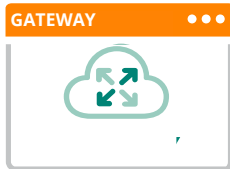


Instant AP Cluster
 No gateway
 Cluster 128 APs
 GUI interface
 Virtual controller auto-election



**WLAN Gateway
 On-Prem Managed APs**

Roaming enhancements
 Dynamic segmentation
 Wired & Wireless Policy
 Layer 3 Roaming / Multi-Zone
 SD-WAN
 Remote APs & VPN
 Radius proxy



AOS10

Aruba Central

Central manages and acts as the controller



Auto clustering
 Scalability and reliability
 Simple management and configuration
 Centralized licensing
 Flexible deployment
 Built-In security



9000-9100-9200 Series
 Next Generation Gateways
 WLAN | UTM | SD-WAN



7000 Series
 Small Branch Gateways
 WLAN | LAN | IDS-IPS



7200 Series
 Large Campus Gateways
 WLAN | NGFW | SD-WAN



Mobility Conductor
 vMobility Member
 vGateway

* "WLAN Gateway" is a controller with more capabilities

Certain features require additional licenses; refer to configuration guides

HPE Aruba Networking CX Switching

AOS-CX Single Architecture, Single Solution Edge to Core to Data Center

End-to-end **single operating system** from access to core to data center

No complex licensing; all typical features enabled out-of-the-box

Aruba **Network Analytic Engine** provides 24/7 analytics

Unified wired & wireless **Dynamic Segmentation** for a secure environment

Aruba CX full programmability provides **limitless integration opportunities**

 ..and a limited lifetime warranty



HPE Aruba Networking Central

Break down siloes with unified management and AI-powered operations

Cloud-native Single Pane of Glass



Deployment Flexibility



Extensibility



Microservices



APIs



Webhooks

AI-Powered Analytics & Automation



Onboarding



Provisioning



Orchestration



Analytics

Built-in Security



Unified Threat Management



Authentication & Profiling



Continuous Monitoring



Role-Based Policy



Visibility

Unified Infrastructure Management

APs



Switches



SD-WAN Gateways



VPN



HPE Aruba Networking UXI – User Experience Insight

Purpose-Built Sensors and Cloud-Based Analytics & Dashboard



Onboards like a user to any network

- Wireless or wired
- LTE optional
- Install near users
- Logs in and tests applications and services like a user
- No cable run required

Constantly tests your environment

- Are services & applications working?
- Triage & troubleshoot with baseline historical data

Simple and powerful cloud portal UI

- Real-time proactive alerts
- Trend and baseline
- Root cause analytics
- Integration to your NOC



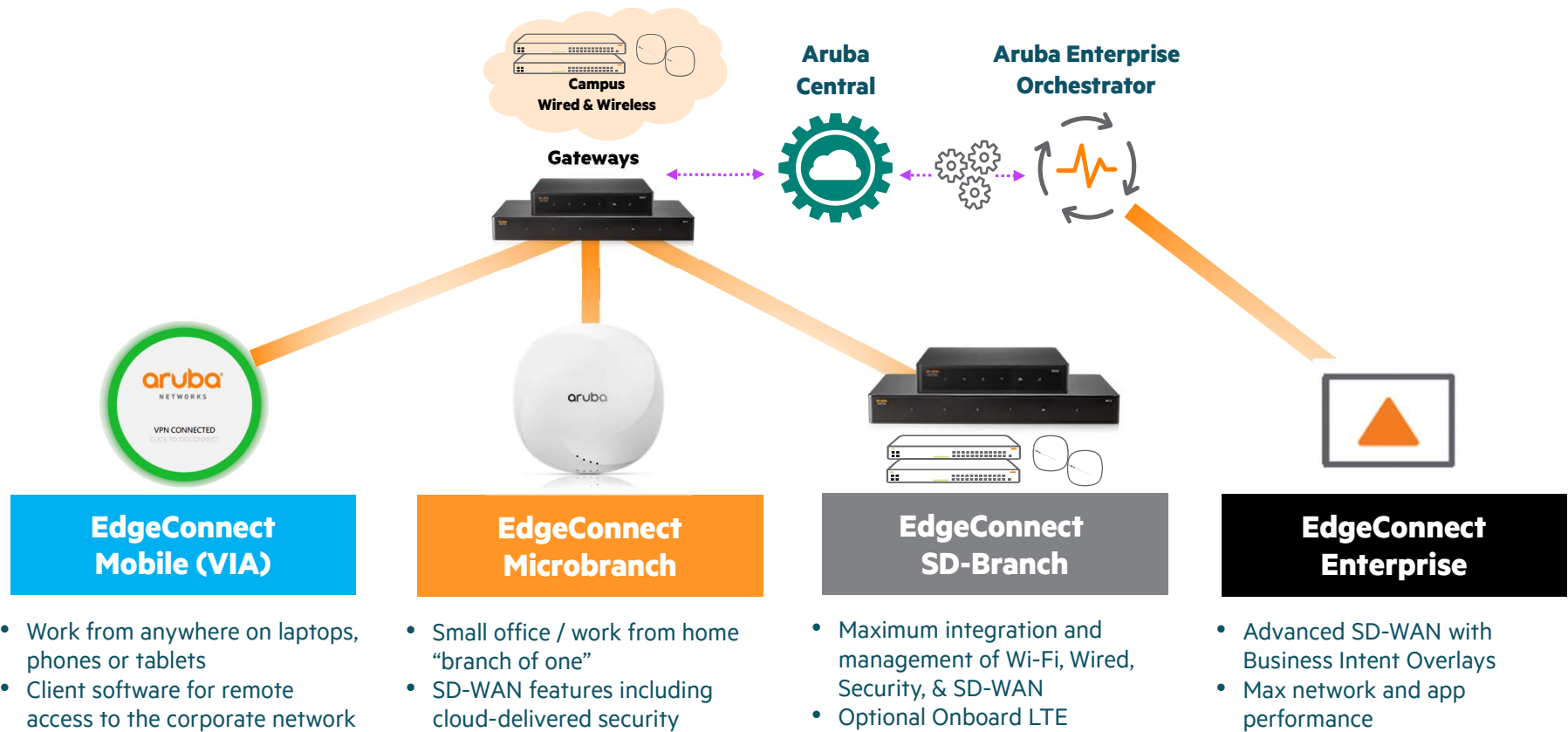
HPE Aruba Networking ClearPass Network Access Control

End-to-End Visibility, Control, and Automation



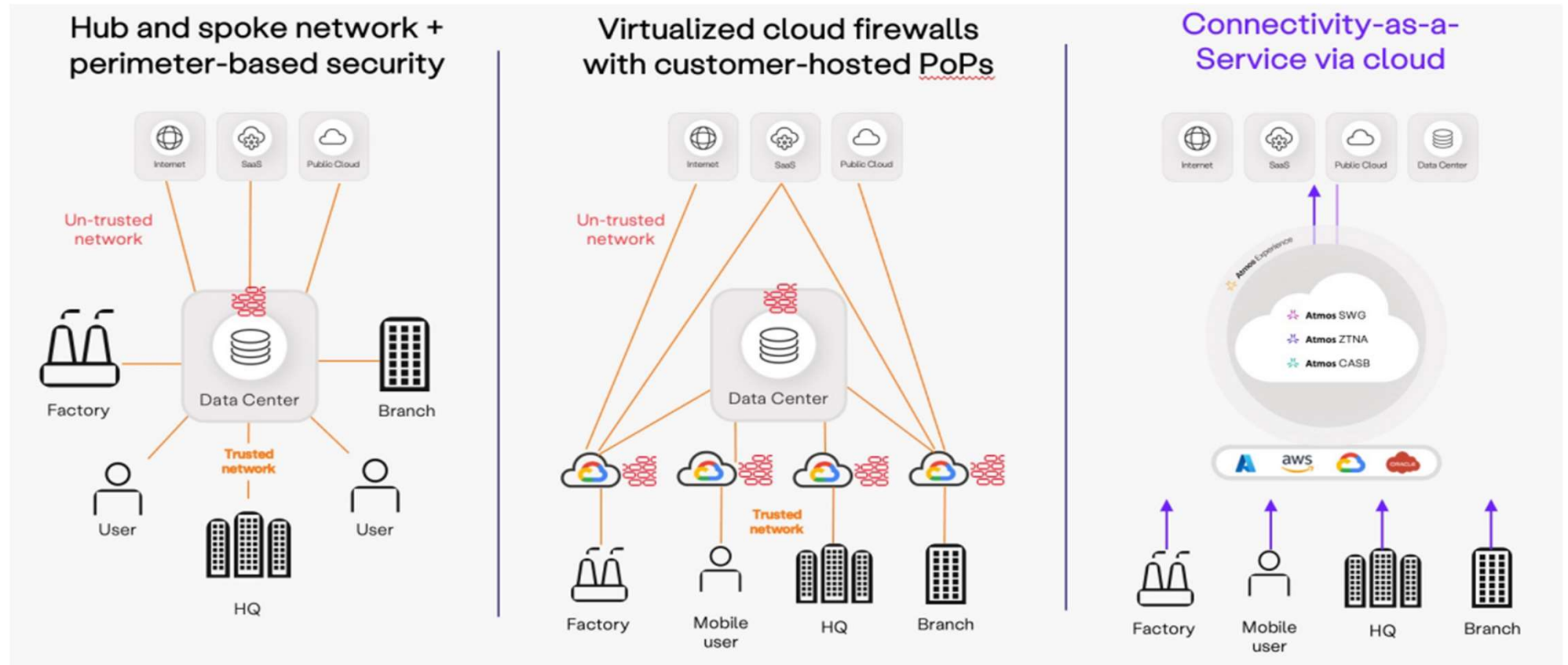
HPE Aruba Networking EdgeConnect

Remote Worker to Branch to Enterprise Solutions Integrated to Aruba Framework



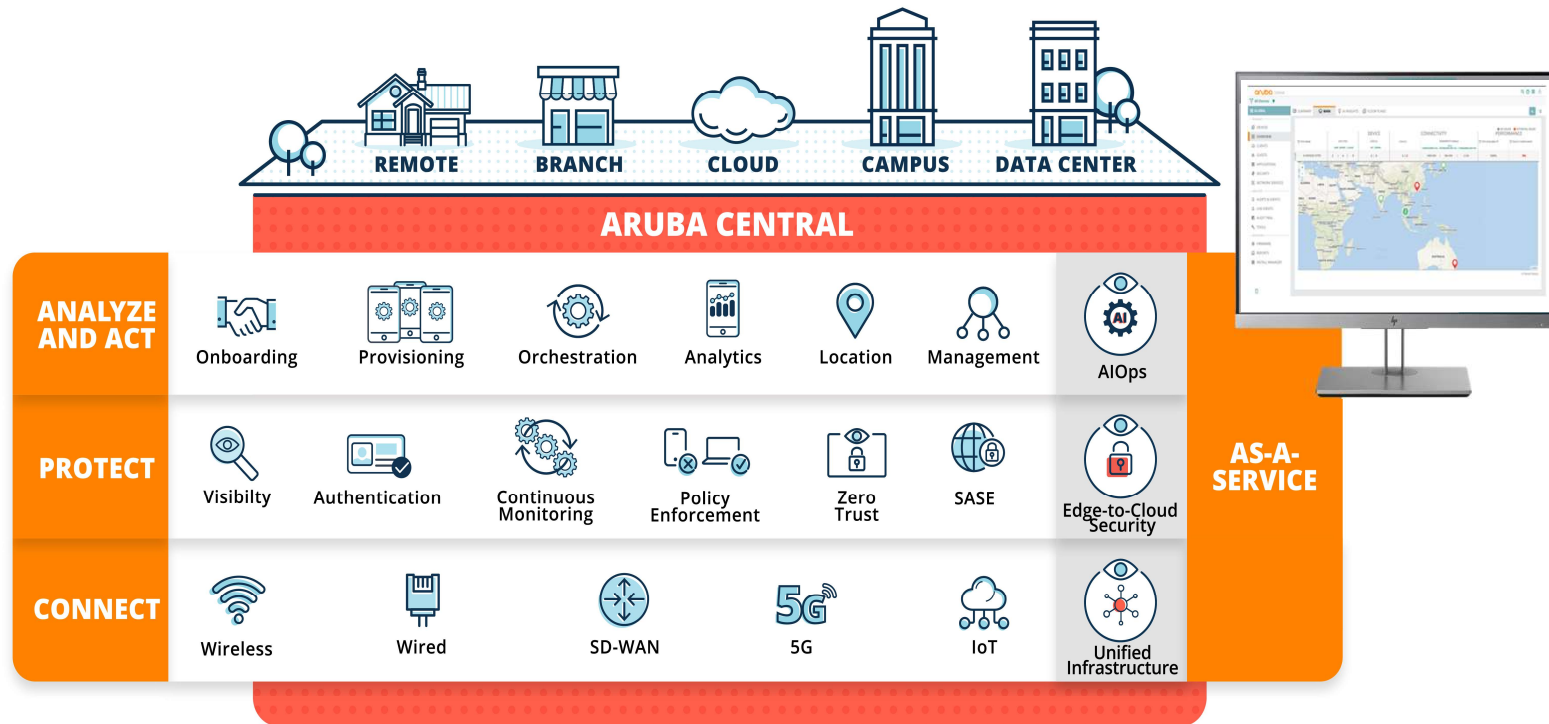
A New Model: SSE – Secure Service Edge

HPE Integration of Axis



HPE Aruba Networking ESP – Edge Services Platform

Redefining the Edge Networking Stack



One Platform from Edge to Core Driven By Aruba Central



HPE Aruba Networking Instant On

Small Business Solution with No Licensing or Subscription Costs

WiFi 6E 6 Ghz Indoor



AP32
(2x2:2)

WiFi 6 Indoor



AP21

Low Density
(2x2:2)



AP22

Mid Density
(2x2:2)



AP25

High Density
(4x4:4)



AP22D

Desk/Wall
(2x2:2)

Wi-Fi 5 Indoor / Outdoor / Desktop



AP11

(2x2:2)



AP12

(3x3:3)



AP15

(4x4:4)



AP11D

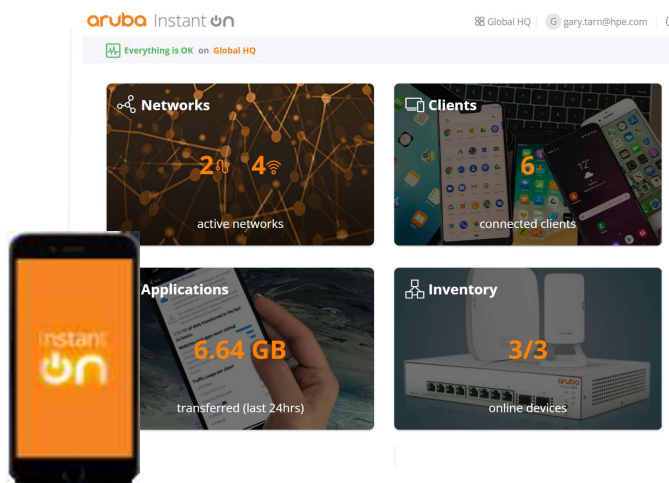
Desk/Wall
(2x2:2)



AP17

Outdoor
(2x2:2)

Instant On Portal & Mobile App



Simple

Built-in security

Extraordinary performance

No hidden fees

Trusted vendor

Switching



Instant On 1960

- Stackable to 4 units
- PoE Class 6 to 60W (802.3bt)
- SmartRate 2.5G

Instant On 1930

- More L2 + static routing features

Instant On 1830

- L2 + static routing
- PoE+ 30W (802.3at)
- Fully managed

Instant On 1430

- SoHo, Unmanaged

Straightforward to Sophisticated

Easy to Start Today... ...Advanced Solutions for Tomorrow

- The leader of wireless technology and standards

- Better software for better customer experience

- Easy to own: Simple & economical licensing



Single architecture top to bottom AOS, CX, Central



Superior AI from industry's deepest experience pool



Advanced solutions as your opportunities grow



Please Add Latest Promo Slides After This Slide

Placeholder...

- Good Deals

- Good Deals

- Good Deals



HPE Aruba CX 6x000 Comparison

	Aruba CX Switching				
	CX 6000	CX 6100	CX 6200	CX 6300	CX 6400
Speeds	1G	1/10G	1/10G	1/10/25/50G	1/10/25/40/100G
Form Factor	Compact 1 U models	Compact 1 U models	Compact 1 U models with stacking (8)	Compact 1 U models with stacking (10)	Efficient 5 and 10 slot (7-12 U) chassis
Deployment	Access	Access	Access	Aggregation, Access Data Center: ToR (1 GbE)	Core, Agg, Access Data Center: EoR/MoR
Onboard Analytics (NAE)			●	●	●
API-driven Orchestration (NetEdit)	●	●	●	●	●
REST APIs, Python Scripting	●	●	●	●	●
Stacking (VSF), Virtualization (VSX)			VSF ●	VSF ●	VSX ●
VSX Live Upgrade					●
Carrier-class HA, deep buffers, large tables					
Dynamic Segmentation			●	●	●
Wi-Fi 6 Ready with always on PoE	30W ¹ ●	30W ¹ ●	30W ●	90W ●	60W ●
Hot swappable, redundant power supplies				●	●
Smart Rate: Multi-gigabit Ethernet				●	●
Aruba Fabric Composer Support				●	●

Footnotes: 1) The 6000/6100 does not support "Always on PoE"

CX 6200 supports SmartRate to 5G
CX 6300 supports SmartRate to 10G



Thank you



Antonio Perez
gm@3av.us
4073352541

