



**Hewlett Packard
Enterprise**

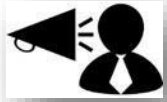
Network Management Competitive



Competitive TME Team

August, 2024

Before we begin...



- Listen by computer audio or dial-in



- All lines are muted during the webinar



- Ask *questions by selecting “Q&A”* and to report any webinar difficulties



- Webinar is being recorded & will be emailed to all attendees





Partner Technical Webinar Series

HPE Aruba Networking Competitive Overview

Session 1: Data Center Switching Competitive Overview

Monday, July 15, 2024 at 9 AM PT / 12 PM ET



Session 2: Network Management Competitive Overview

Monday, August 26, 2024 at 9 AM PT / 12 PM ET

Session 3: Security SSE Competitive Overview

Monday, September 23, 2024 at 9 AM PT / 12 PM ET

[\(Click here\)](#) to register and view session recordings for the webinar series



Disclaimer



- ★ All competitor information is from public sources, analyst reports, Aruba sellers, and the Internet.
- ★ Technical & Commercial Competitive data presented in this deck are current as of this date.
- ★ All slides are strictly HPE internal and Authorized Partners only, and not meant to be shared outside.

Today's Agenda

Competitive Landscape Introduction – 5 minutes

Cisco Catalyst Center (On-prem) – 12 minutes

Cisco Meraki (Cloud)– 12 minutes

Juniper Mist Dashboard – 12 minutes

ExtremeCloud IQ – 12 minutes

Wrap up and Q&A – 5 minutes



Competitive Landscape

An Introduction

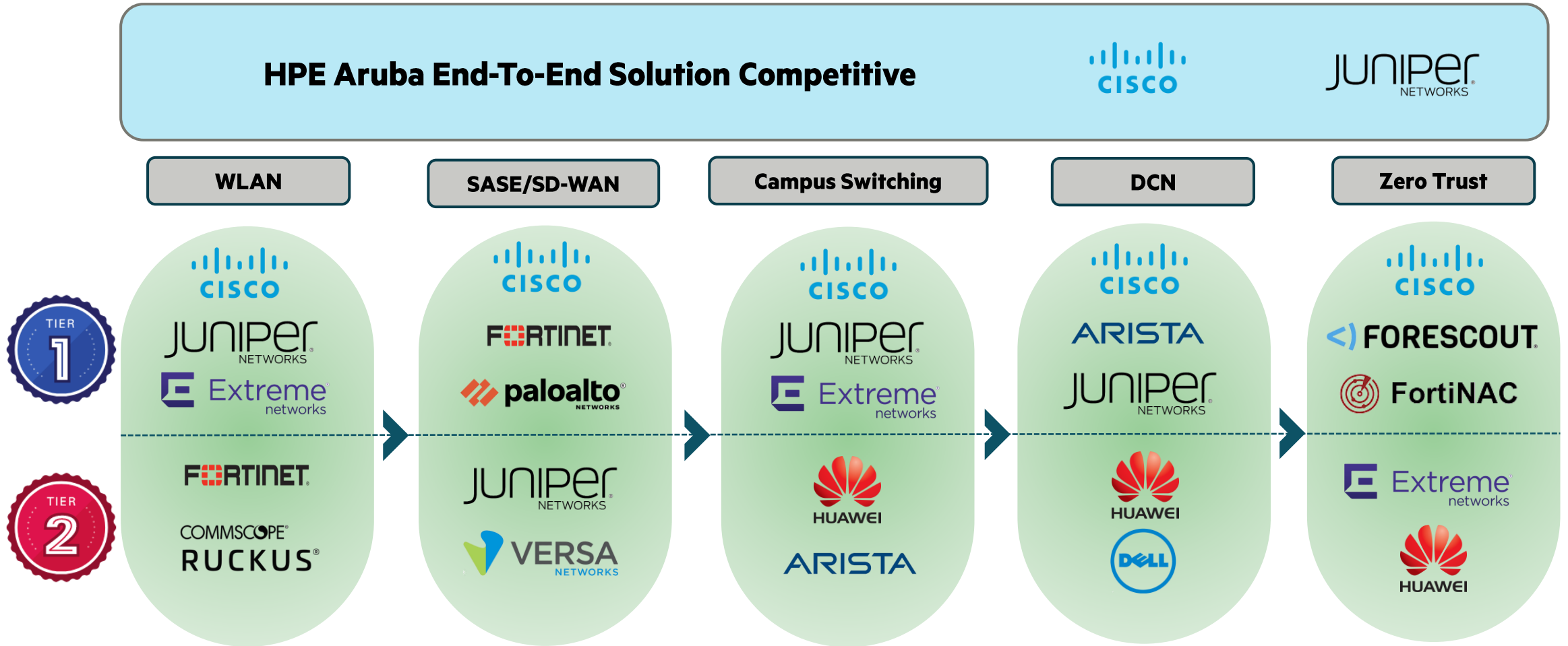


Gartner® Magic Quadrant™ - Enterprise Wired & Wireless LAN



HPE Aruba Networking a Leader for the 18th consecutive time!

Competitive Landscape



Competitive Vendors Snapshot



- Enterprise Portfolio consolidation – OnPrem and Cloud
- Cisco Networking Cloud is the new focus - IBN & DNA gone
- Deep Discounts and Bundle and Win



- AI driven Enterprise powerful marketing message
- Leverages leadership in Gartner MQ
- Aggressive Sales team with a solid portfolio



- Full stack vendor through many acquisitions
- Large Portfolio and Competitive price strategy
- Credible threat with product consolidation & Cloud focus



- Single OS and competitively priced portfolio
- Security expansion - Cloud NAC (AGNI) and NDR
- Aggressive to gain share in Enterprise Wired & Wireless



- Expand the existing security footprint
- Aggressive pricing and full stack portfolio
- Direction is move to Cloud – Management, SASE/SD-WAN

Cisco

Cisco Catalyst Center (On-prem)



Introduction



Formally known as DNA Center



It was Cisco's solution to Intent Based Networking



Initial adoption by customers was limited



Can support a large number of customer use cases



Rebranded to Cisco Catalyst Center in 2023



Day -1

Devices Supported, Scale, Architecture

Devices Supported

- All Cisco Switches and AP's
 - No Meraki Switches
 - No legacy Meraki APs, GWs, etc (MRxx, MXxx)
-

Deployment Option

- Catalyst Center is on-prem
 - Used for Campus only
 - Limited deployment flexibility
-

Scale

- Requires high end server for VM
 - AI reaches out to the cloud (Need internet connectivity to utilize AI capabilities)
-

Architecture

- Tight coupling with ISE
 - SD Access uses LISP & IS-IS
 - Complicated workflows
-



Day -1

Feature Sets Mapping and License Comparison

Feature	HPE Aruba Central		Cisco Catalyst Center	
	Feature	License Tier	Feature	License Tier
Feature	NetConductor	Advanced	SD-Access	Advantage
Policy and network automation	AI Insights	Foundation/Advanced	End Point analytics, AI network analytics	Advantage
User Based Tunnel	User Based Tunneling	Foundation	No similar feature available	XXXX
Network Analytics	UCC, AirMatch	Advanced	Spaces	Advantage
Wireless services (advanced)	CloudGuest, Location Services	Foundation	Multiple	Advantage
Wireless services	IDS/IPS, RAPIDS, Client Insights,	Foundation	Threat grid	Advantage
Security services	Client Insights, NetConductor	Foundation	Multiple	Advantage
Wired services	Client Insights	Foundation	Endpoint Analytics	Advantage
Profiling Advanced	Client Insights	Foundation	Endpoint Analytics	Essentials
Profiling Basic	ClearPass	Clear Pass	ISE	ISE Premier
NAC (advanced)	Cloud Auth	Foundation	ISE	ISE Advantage / ISE Premier
NAC (basic)	Base	Foundation	Base	Essentials

Day 0

Onboarding, Bulk Configuration (Ease of Configuration)



Onboarding

- Catalyst switches uses PnP to onboard Catalyst switches.
- Central has superior stacking functionality through Central

Bulk Configuration

- Lacks UI based templates
- Templates are versatile but complicated

Ease of Configuration

- Complex workflows
- Many features requires Cisco trained engineers



Day 1

Monitoring, Logging, AI story



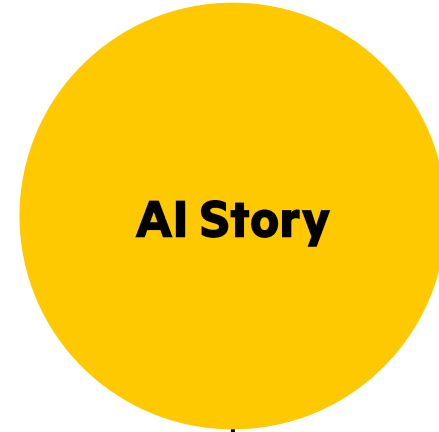
Monitoring

- Has good monitoring dashboards
- Detects AAA, DHCP and DNS failure but not latency



Logging/ Reporting

- Can recognize fewer applications than Central
- No Central like smart phone app



AI Story

- AI support requires Advantage license
- Needs to send data to the cloud for AI processing



Day 2

Troubleshooting, Visibility, API capabilities and Firmware Upgrades

T-shooting

- SD-Access debugging is difficult
 - Complicated workflows
-

Visibility

- No visibility of Meraki switches
 - No visibility for legacy Meraki APs, Gateways, etc
-

High Availability

- No active-active controller
 - Complicated stack member replacement workflow
-

Firmware Upgrade

- No similar feature like ISSU
 - Complicated AP upgrade
-



Key Takeaways

Aruba Central vs Cisco Catalyst center

Cisco Catalyst Center

Aruba Central

Cloud solution lacks capabilities of Catalyst Center



Supports both cloud and on prem solution.

Flexible but complicated workflows



Simpler workflows

Tight coupling with ISE



No tight coupling with Clearpass

Tunneling requires premium licensing



User based tunneling in base license

1500+ applications supported with NBAR



3700 applications supported

Complicated trouble shooting



Simpler troubleshooting

Cisco

Cisco Meraki (Cloud)



Introduction



Meraki acquisition enabled simplified Cloud Management.



Customers have flexible choices.



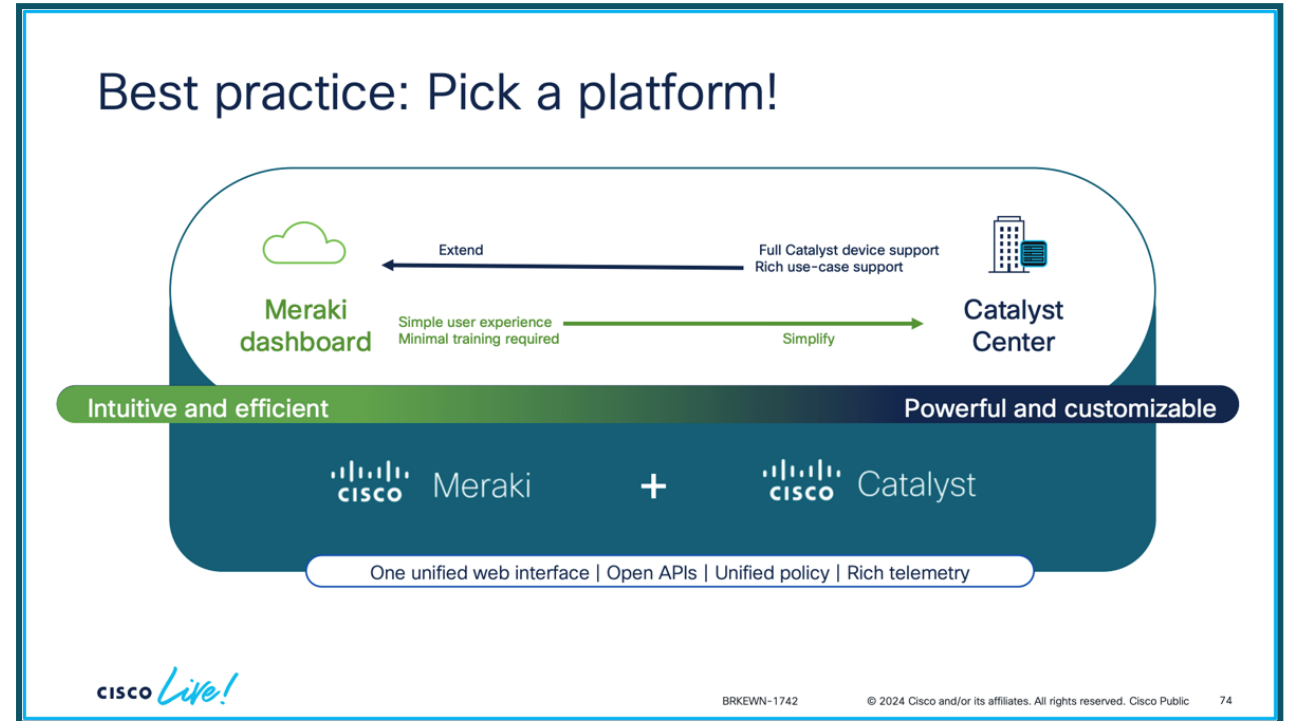
SSE platform unification is underway.



Pivoting to a dual management portfolio.



“Meeting the Customer where they are”



Day -1

Devices Supported, Scale, Architecture

Devices Supported

- All Meraki devices
 - Limited Cisco Devices
 - Low Feature Parity
-

Deployment Option

- Meraki is Cloud Only
 - Catalyst Center for on-prem
 - Limited deployment Flexibility
-

Scale

- Meraki server and Data Center limits
 - 25k devices per Organization.
 - Central Offers better Scalability
-

Cloud Architecture

- Multi-tenant Solution
 - Migration Journey to Micro-services
 - Central built on Micro-services
-



Day -1

Licensing

Tiers

- 2 tiers for Switching
 - 3 tiers for SD-WAN and Routing
 - 2 tiers for WLAN
-

TCO

- Individually Licensed per Series
 - Enterprise License includes NBD delivery & 24*7
-

Discounts

- Heavy Discounts on Hardware
 - Better pricing when bundled with Other Cisco Products Ex. TE, ISE
 - Lifetime Warranty Included
-

Flexibility

- Delayed activation for 60 days only!
 - 30 Days Grace period
-



Day 0

Onboarding, Bulk Configuration, Admin Access Control



Onboarding

- Zero Touch Provisioning
- Onboarding with Order ID
- *Mobile App only for Monitoring

Bulk Configuration

- Bulk Network Creation Tool
- Network Templates
- No Local override supported

Admin Access Control

- Read only or Full access
- Access granted per Network
- Lacks Granular Control

Day 1

Monitoring, Logging, AI story



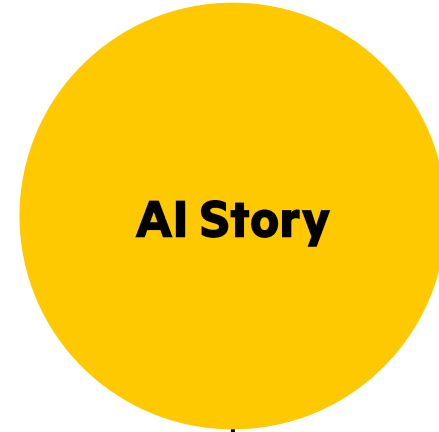
Monitoring

- Uplink health, Memory, CPU data for Switches
- Cloud Monitoring for Catalyst
- Low Visibility into System Health



Logging/ Reporting

- Wireless Health for WLAN
- Org-level Summary report
- Vital info can be missing



AI Story

- AI enhanced Auto RF
- Solves ~15 usecases with AI
- No AI/ML for endpoint classification



Day 2

Troubleshooting, Visibility, API capabilities and Firmware Upgrades

Troubleshoot

- Cloud Packet Capture
- Ping, Traceroute, MTR, ARP Table
- No CLI Access

Visibility

- CPU, Memory data for MS
- Limited System health data with MX & MR
- Traffic Analytics with MX

Enterprise Grade Features

- MS supports L7 Fingerprinting
- Cisco Ecosystem Integrations
- BGP only supported with MX

Firmware Upgrades

- Staged Upgrade with Switches
- Smart Upgrade for MR
- Network Level Upgrades only



Key Takeaways

Aruba Central vs Meraki Dashboard Cloud

Cisco Meraki

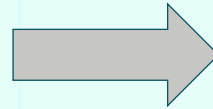
Aruba Central

Meraki is not fully Microservices based



Aruba Central's Modern Cloud Architecture

Low Visibility into System Health Info



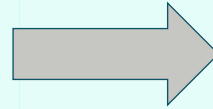
Threshold Alerts with Aruba Central

Low Serviceability



Central provides rich troubleshooting tools with CLI

Low Feature Parity with Flexible management



No such Trade-off with Aruba Central

Weak AI Story



Central AI Insights ~40 use cases



Juniper Mist



Introduction



Full stack vendor



Microservices based cloud



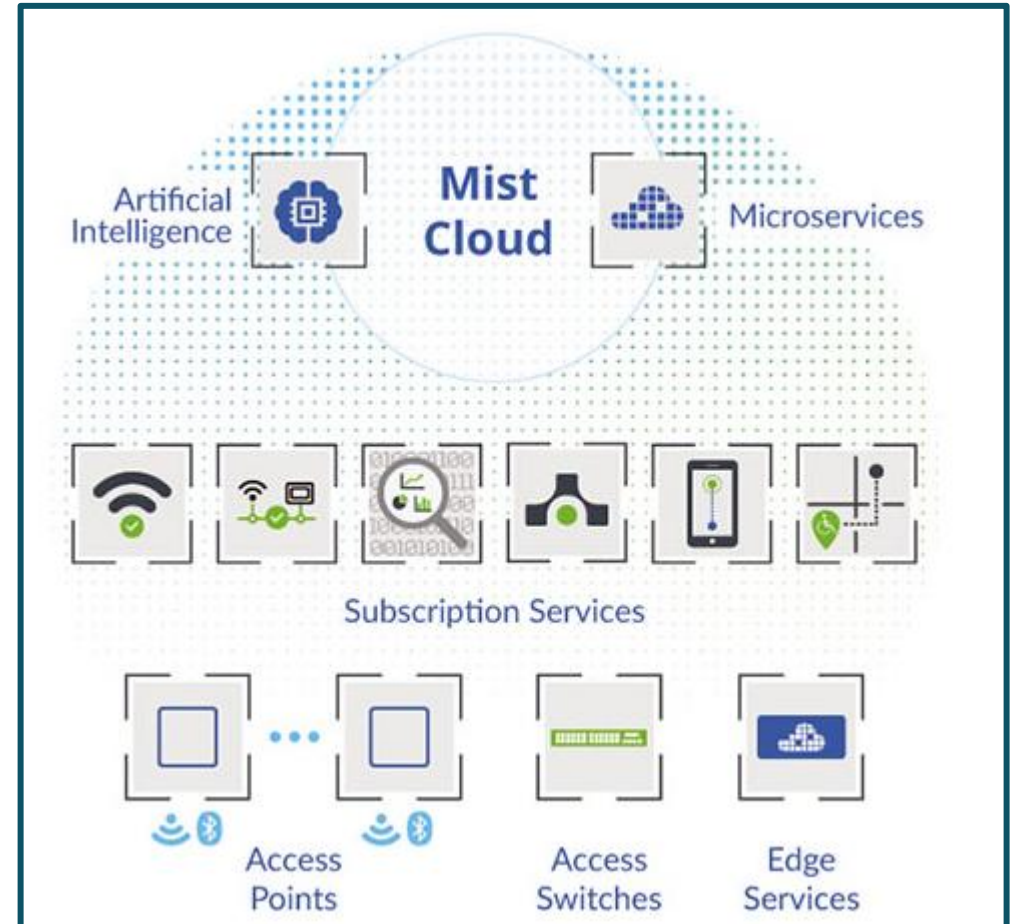
Heavily marketed Marvis AI



Almost a single pane of glass



Multiple subscriptions



Day -1

Devices Supported, Scale, Architecture

Devices Supported

- No comparable product to UXI
 - No 3rd party device observability
-

Deployment Option

- No On-Prem
 - No Wi-Fi 7
-

Scale

- Max 256 APs in Distributed WLAN
 - APs are not enterprise ready
-

Architecture Support

- No MS Azure & private cloud
 - No Dynamic Segmentation
-



Day -1

Licensing

Tiers

- Complex license enchilada
 - No license upgrades
-

TCO

- Advanced license mandatory
 - On all devices in a site
-

Discounts

- vBLE for free
 - Hardware & software bundles
-

Flexibility

- No delayed activation
 - No co-termination
-



Day 0

Onboarding, Bulk Configuration, Services



WLAN

- Hierarchical configuration
- No GPS chips in AP



Switching

- Support for ESI LAG. No need for VSX
- No support for CLI syntax checking in switch Template similar to MultiEdit



Services

- Cisco to Juniper config convertor
- No policy optimization



Day 1

Monitoring, Logging, AI story



Monitoring

-
- Weak application recognition
 - Amiss client fingerprinting



Reporting

-
- Only 7 days of statistics
 - Premium reporting costs extra



AI Story

-
- Only 20 use-cases solved
 - Requires advanced licensing



Day 2

Troubleshooting, Visibility, Failure Scenarios and Firmware Upgrades

Troubleshoot

- No CLI Access for AP's
 - No AI Assist
-

Visibility

- No firewall session visibility
 - No real network sensors
-

Failure Scenarios

- Large downtime in Edge Clusters
 - No 1800 TAC hotline but chatbot
-

Firmware Upgrades

- No Live Upgrades
 - No Firmware Compliance
-



Key Takeaways

Aruba Central vs Juniper Mist

Juniper Mist

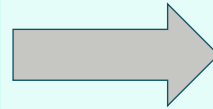
Aruba Central

Restricted deployment options



Excellent On-premise offerings

Incomplete WLAN portfolio lacking innovation



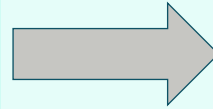
Rich Wi-Fi 7 portfolio with GPS & UXI sensors

Mandates advanced tier, not economical



Feature rich foundation subscriptions

No Wired Tunnels from JunOS switches to Mist Edge



Role based Dynamic Segmentation

Weak Application & Client visibility



ML powered Application & Client Visibility





Extreme

ExtremeCloud IQ



Extreme Cloud IQ

- ➔ **Cloud-based network management platform**
- ➔ **Capable of managing third-party networks**
- ➔ **Multiple deployment options: public, private, and ExtremeCloud Edge**
- ➔ **Promoting ExtremeCloud IQ as their management platform**
- ➔ **Aggressive marketing strategies to gain customer mind share**



Day -1

Devices Supported, Scale, Architecture

Devices Supported

- Universal h/w APs & Switches
 - 'Monitor-only' for legacy Extreme Wireless and WiNG APs
 - No VDX, MLX, SLXe
-

Deployment Options

- Public and Private Cloud with ExtremeCloud IQ
 - On-prem with ExtremeCloud IQ – Site Engine
 - ExtremeCloud Edge
-

Scale

- APs fail in High Density setups
 - Lacks UNII-4 channel support
-

Architecture

- Distributed with ExtremeCloud IQ
 - On-Premises Distributed: WiNG OS
 - Centralized with ExtremeCloud controller
-



Day -1

Licensing

Tiers

- 4 tiers for SaaS and On-Prem
 - Additional licenses for features
 - No Co-pilot license (AI features) for centralized deployments
-

TCO

- No AI in Base licenses
 - Additional license for 'Site Engine'
 - Additional Premier and MACsec Switch license
-

Discounts

- Deep discounts for E-Rate
 - Free installations
-

Flexibility

- No delayed activation
 - No co-termination
-



Day 1

Monitoring, Logging, AI story



Onboarding

- Many switches lack TPM chips
- APs lack GPS chipsets



Configuration

- Migrating between OSs requires complete reconfiguration
- Switch OS's have non identical CLIs



Day 1

Monitoring, Logging, AI story



Monitoring

- Monitoring data scattered across multiple screens
- Lacks purpose-built h/w sensors



AI Insights

- No sustainability insights
- CoPilot anomaly insights and Connectivity experience data are available for 7 days only



AI Story

- Smaller dataset to train AI
- Lacks local and peer comparison
- Lacks natural language queries



Day 2

Troubleshooting, Visibility, Failure Scenarios and Firmware Upgrades

Troubleshoot

- Limited CLI Access for APs and S/Ws
 - No AI-ML based management tools
 - No NAE like feature
-

Visibility

- CoPilot provides insights in only 6 categories
 - Lacks Application Recognition
-

Failure Scenarios

- PoE always on feature lacking on switch
 - Dual and Failover PoE for APs
-

Firmware Upgrades

- Stacking support in cloud
 - No In Service Software Upgrade
-



Key Takeaways

Aruba Central vs ExtremeCloud IQ

ExtremeCloud IQ

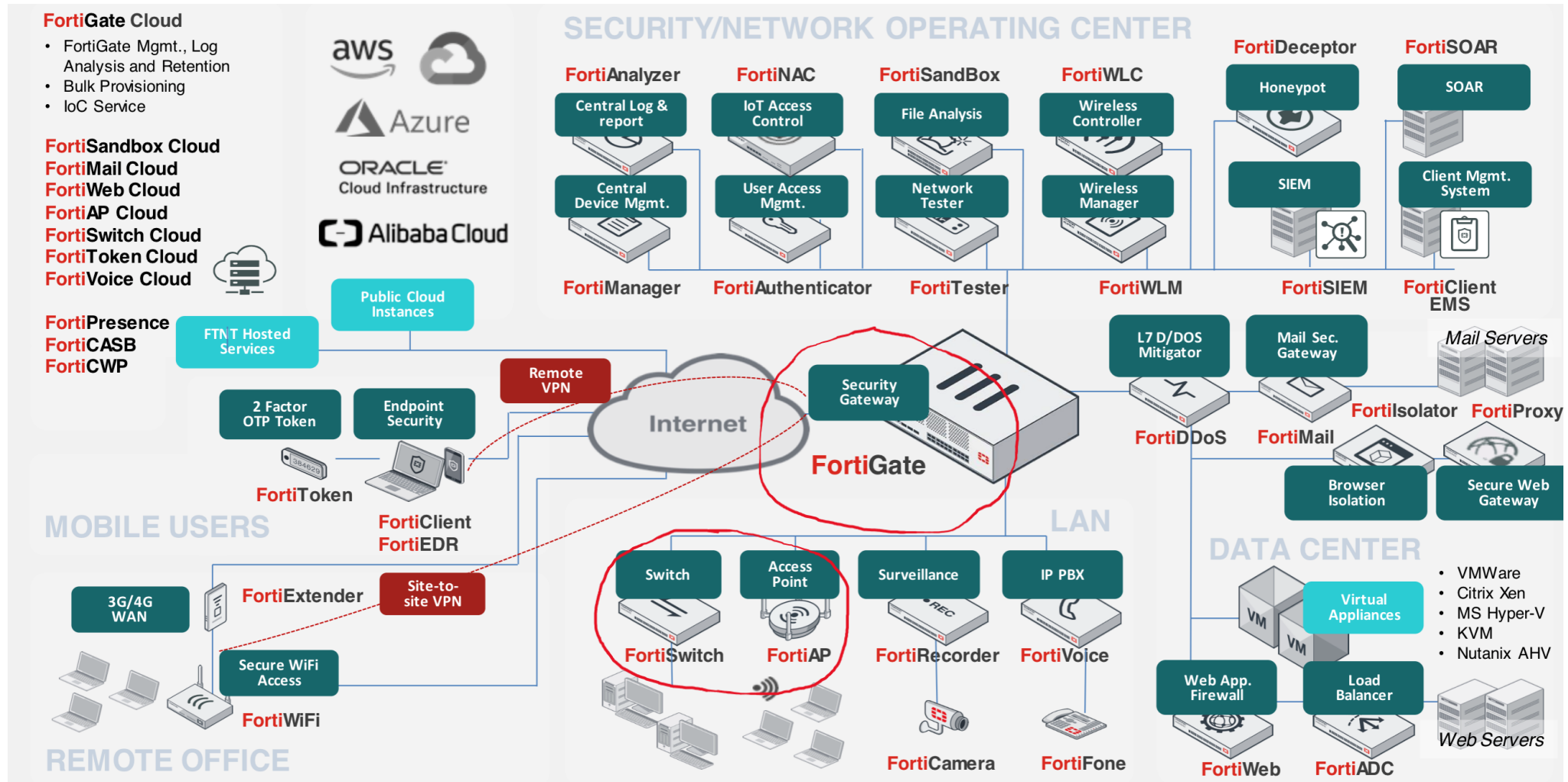
Aruba Central

No AI in the base license	➔	Feature rich foundation license
CoPilot provides insights in only 6 categories	➔	Central AI Insights ~40 use cases
No AI-ML based management tools	➔	Offers full spectrum of AI-powered management tools
Boasts about having 1.4+million connected endpoints to use as a dataset	➔	Central has over 1.5 billion connected endpoints to use as a dataset
Confusing licensing and subscription model	➔	Simple, consistent licensing framework across the board



The Fortinet logo is displayed in white, bold, sans-serif font against a background of wavy, overlapping bands of purple and blue that transition into a solid pinkish-red on the right side.

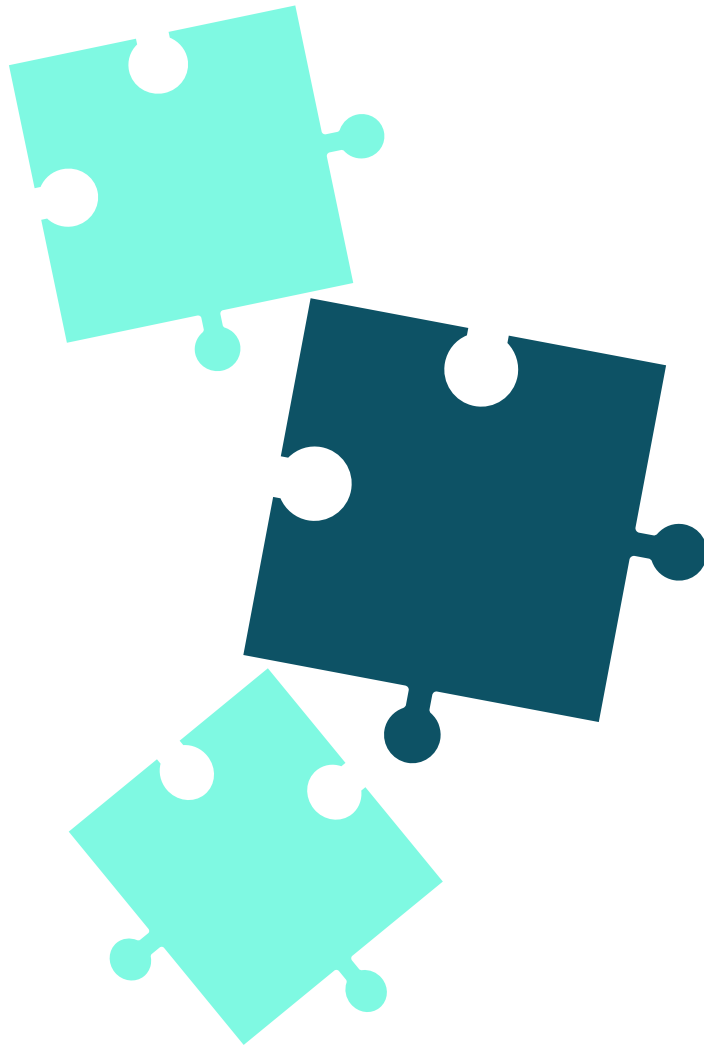
Fortinet Product Portfolio



[Fortinet Product Matrix](#)

[Fortinet Product Pricing](#)

Fortinet Network Management Options



Platform	On-Prem Management	Cloud Management
FortiAP	FortiGate (via built-in controller) FortiWLM (legacy)	FortiLAN Cloud ((Standalone) FortiManager Cloud (when managed via FortiGate)
FortiSwitch	FortiGate (via built-in controller) FortiSwitch Manager (for standalone use cases)	FortiLAN Cloud (Standalone) FortiManager Cloud (when managed via FortiGate)
FortiGate	FortiManager FortiManager VM	FortiGate Cloud FortiManager Cloud



Fortinet Cloud Management

FortiManager Cloud

- Centralized management for Switches, AP, FortiGate
- Integrated with Fortinet Security Fabric
- Cloud adaption of on-prem version

FortiLAN Cloud

- Only for Switches & APs
- MSP portal supported
- Devices do not run FortiOS
- No ties to FortiGate & FortiPlatform

FortiGate Cloud

- FortiGate provisioning, SD-WAN config
- 1-touch with FortiDeploy
- Supports configuration & management for Forti-AP
- MSP portal



Wrap Up & Call to Action



Help Us To Help You

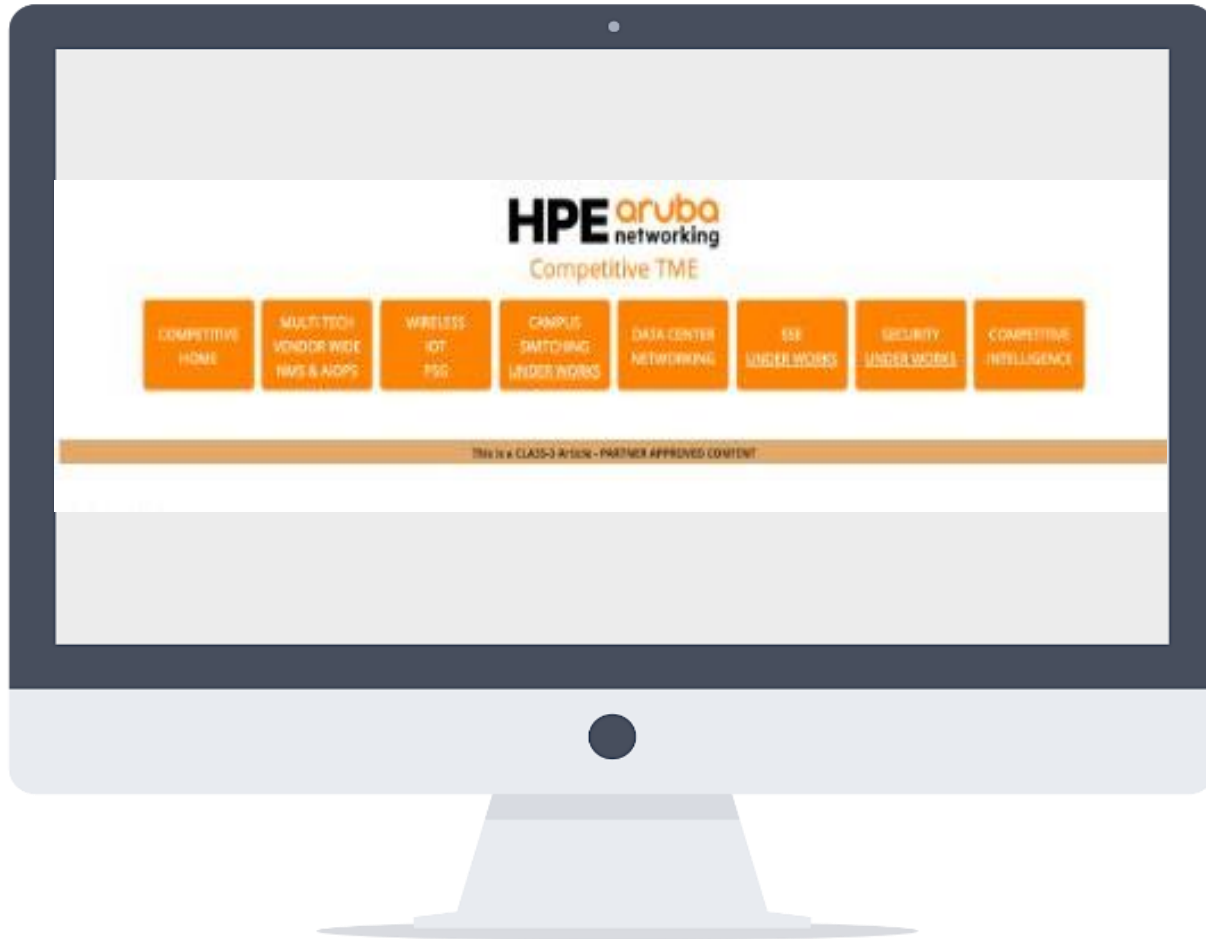
aruba-competitive-tme@hpe.com

beat_meraki@hpe.com

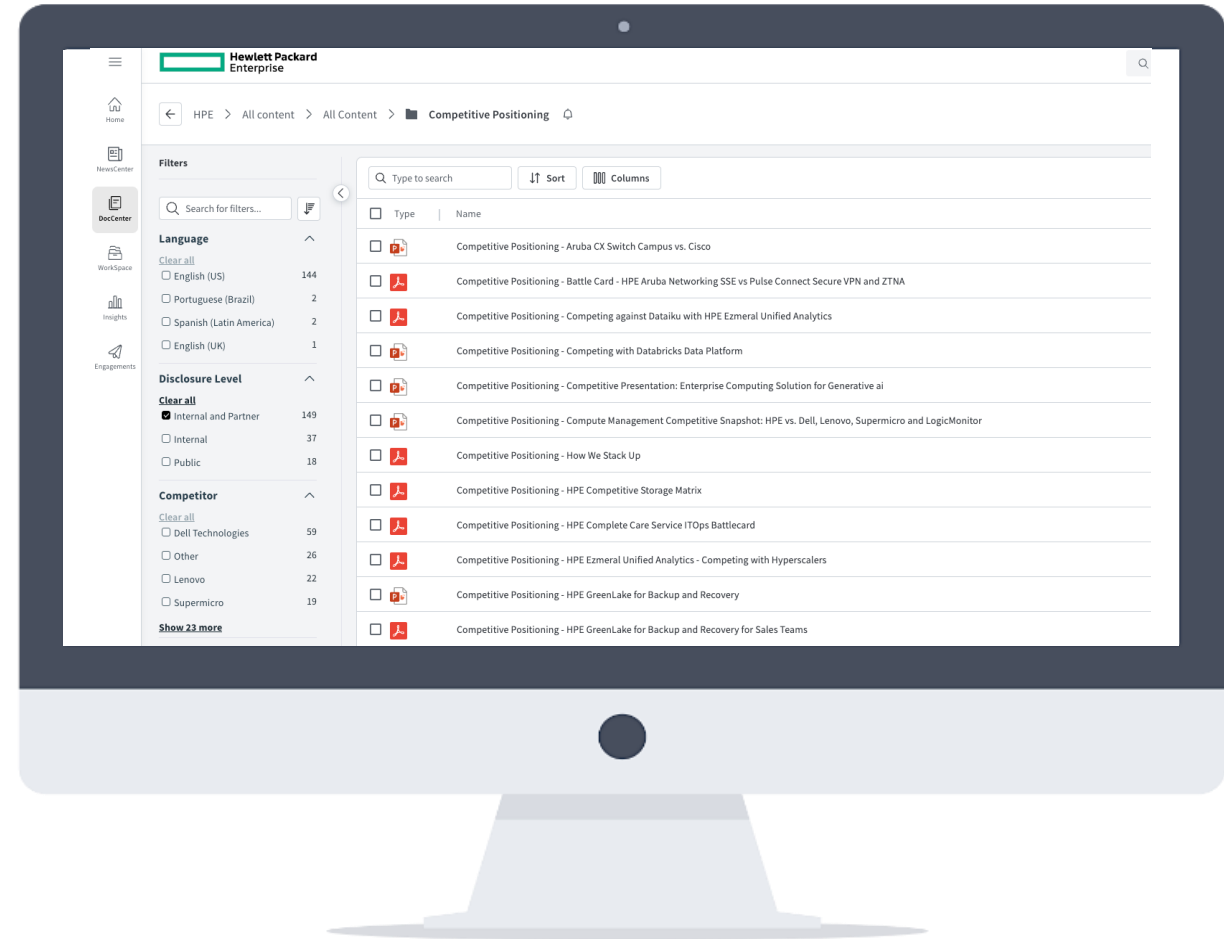
beat_mist@hpe.com

**Important
Mailers**

Where To Find Collateral?



Arubapedia For Partners



Seismic



Questions?



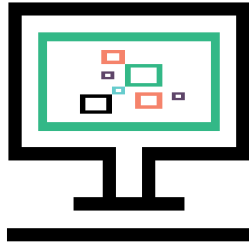
Partner Resources

Partner Portals



Airheads Community

[\(Click Here\)](#)



Arubapedia for Partners

[\(Click Here\)](#)



Partner Ready for Networking portal

[\(Click Here\)](#)

Live Support



Ask Questions
Get Answers

Channel SEs (CSEs)

Regional channel support

Partner Technical Webinar Series

HPE Aruba Networking Competitive Overview

Session 1: Data Center Switching Competitive Overview

Monday, July 15, 2024 at 9 AM PT / 12 PM ET

Session 2: Network Management Competitive Overview

Monday, August 26, 2024 at 9 AM PT / 12 PM ET

Session 3: Security SSE Competitive Overview

Monday, September 23, 2024 at 9 AM PT / 12 PM ET

([Click here](#)) to register and view session recordings for the webinar series

Thank You!

aruba-competitive-tme@hpe.com

