



Product and Solution Overview



Intelligence²

Intersecting Human and Artificial Security Intelligence
as a Force Multiplier in Enterprise Defense

1

Hillstone Product Portfolio




















2

Key Technologies and Solutions

Hillstone Product Portfolio

Intelligence 2

Hillstone's Product Portfolio

| | | | | | | | |
|-------------------------------|---|---|--|---|--|--|--|
| <p>Centralized Management</p> | <div style="display: flex; justify-content: space-around; align-items: center;"> <div style="text-align: center;">  HSA/vHSA <small>Hillstone Security Audit Platform</small> </div> <div style="text-align: center;">  HSM/vHSM <small>Hillstone Security Management Platform</small> </div> <div style="text-align: center;">  CloudView <small>Cloud Security Monitoring & Analytics</small> </div> </div> | | | | | | |
| <p>Core Products</p> | <p>PERIMETER PROTECTION</p> <div style="text-align: center;">  E-Series NGFW </div> <div style="text-align: center;">  S-Series NIPS </div> <div style="text-align: center;">  AX-Series ADC </div> | <p>BREACH PREVENTION</p> <div style="text-align: center;">  I-Series sBDS </div> <div style="text-align: center;">  T-Series iNGFW </div> | <p>DATA CENTER PROTECTION</p> <div style="text-align: center;">  X-Series DCFW </div> | <p>CLOUD PROTECTION</p> <div style="text-align: center;">  CloudHive <small>Micro-segmentation</small> </div> <div style="text-align: center;">  CloudEdge <small>Virtual NFW</small> </div> | | | |
| <p>Security Services</p> | <div style="display: flex; justify-content: space-around; align-items: center;"> <div style="text-align: center;">  StoneShield </div> <div style="text-align: center;">  Sandbox </div> <div style="text-align: center;">  Intrusion Prevention </div> <div style="text-align: center;">  Anti-Virus </div> <div style="text-align: center;">  URL Filtering </div> <div style="text-align: center;">  Anti-Spam </div> <div style="text-align: center;">  IP Reputation </div> <div style="text-align: center;">  Botnet C&C Prevention </div> </div> | | | | | | |

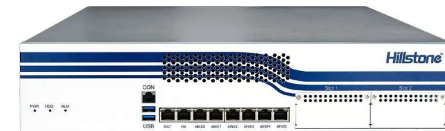
Perimeter Protection



E-Series
Next-Generation Firewalls (NGFW)



S-Series
Network Intrusion Prevention
System (NIPS)



AX-Series
Application Delivery
Controller (ADC)

E-Series: Next-Generation Firewalls

- Full-concurrency, High-performance Architecture
- Fine-granular & Multi-dimensional Control
- High Efficient L2-L7 Full Security Protection
- Advanced Networking Features
- Comprehensive Security Report



S-Series: Network Intrusion Prevention System

- Unparalleled threat protection without performance compromise
- Granular reporting with user targeted viewpoints
- Ease of deployment and centralized management
- High Availability without network Interruption



AX-Series: Application Delivery Controller (ADC)

Improved system availability through comprehensive load balancing and health check



Best user access experience based on improved server / bandwidth efficiency, and optimized application performance



Effortless IPv6 migration and SSL offloading performance guaranteed HTTPS upgrading



End-to-end secure application delivery



Intelligent Breach Prevention

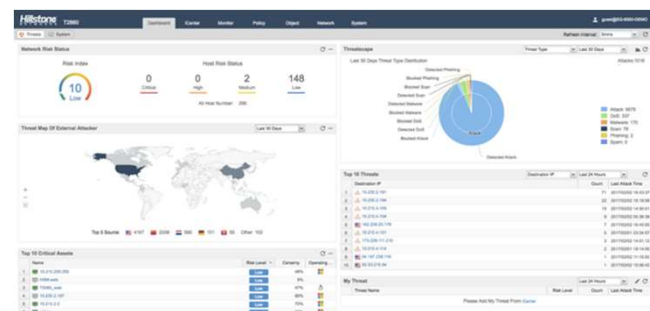


T-Series
Intelligent Next-Generation Firewalls (iNGFW)



I-Series
Sever Breach Detection System (sBDS)

T-Series: Intelligent NGFW



Complete Risk/Threat Visibility Besides Traffic/Apps/Users

Complete Kill Chain Mapping

Rich Forensic Information on Advanced Threats

Immediate Mitigation

Industry Best Threat Intelligence Feeds

I-Series: Hillstone Server Breach Detection System



Hillstone Post-Breach Detection Solution to Protect Critical Servers from Advanced Threats



Datacenter Protection



X-7180



X-9180



X10800

Data Center Next-Generation Firewalls

Hillstone Data Center Firewall: X-7180



- Customers
 - Carriers, Large Enterprises, Higher Education & Government, Managed Security Service Providers
- Deployment Scenarios
 - Carrier MAN and Mobile
 - Carrier IDC, Government Cloud Data-Center
 - Data Center or University Campus Internet Exit

- High Performance
- Carrier-Grade Reliability
- Low Power Consumption
- Unique Twin-Mode Firewall
- Massive Virtual Firewall for MSSPs
- Comprehensive NAT/IPV6 Support
- Rich L2-L7 Security Functionality

X9180 at a Glance



Product Name: SG-6000-X9180

Product: 7U, front panel 6 horizontal slots, rear panel 4 vertical slots, 4 power supplies, 20 fans, maximum power 2300W

Performance: 500 Gbps throughput, 5.4M new sessions per second, 240M concurrent sessions, IPSec 150G, IPS 200G

HA: Carrier grade reliability at 99.999%; support twin-mode HA deployment for redundant data centers

Architecture: Fully distributed architecture; same HW & SW architecture with X10800; can use X10800 expansion modules

HW highlights: Fully redundant architecture; front and rear air supply; 100GE interface; support future upgrade and expansion

Software features: 3000+ applications identification and control, tens of millions of URL filtering; support up to 1000 vSys

X10800 at a Glance



Product Name: SG-6000-X10800

Size: 18U

Performance: 1.2 Tbps throughput, 10 million new sessions per second, 480 million concurrent sessions

Processing capability: 2 times more than X7180

Architecture: Same as X7180 platform, scalable to 7 Tbps in the future

HW highlights: Front and rear air supply, 100GE interface, switching Module redundancy, and 12 full-width slots

Software features: application identification and control, IPS, URL filtering and antivirus

Cloud Protection



CloudEdge

Security Solution for
Network Function Virtualization (NFV)



CloudHive

Micro-Segmentation Solution for
Virtualized Data Centers

CloudEdge: Virtual NGFW

APAC CIO Outlook 25 MOST PROMISING
AMAZON
SOLUTION PROVIDERS - 2016

Info Security
Products Guide
2018
GLOBAL
EXCELLENCE
AWARDS
★★★★★



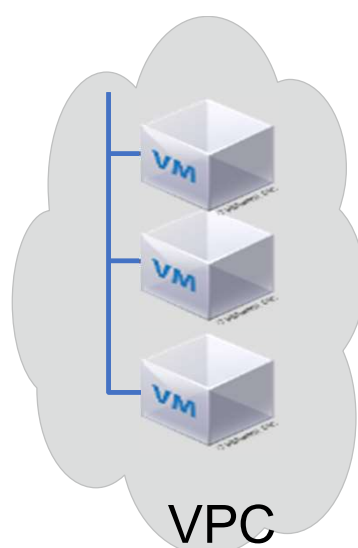
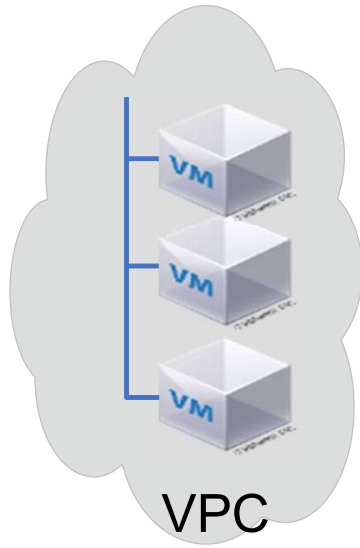
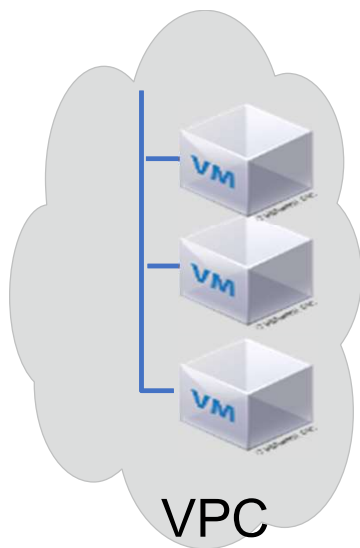
CloudEdge



CloudEdge



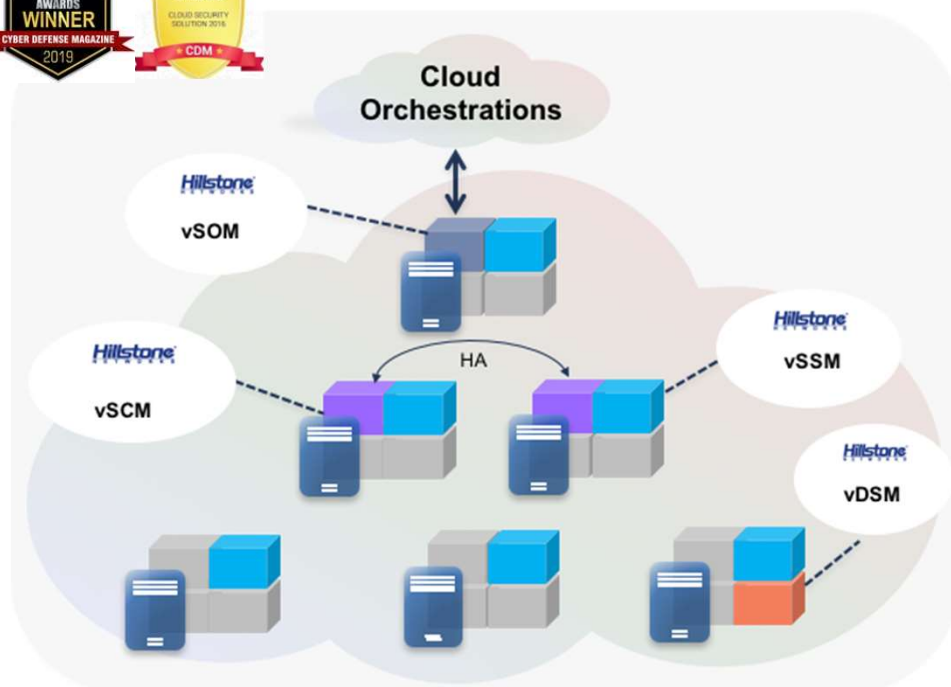
CloudEdge



North-South Traffic Protection for tenants

- NAT, Access Control, Attack Defense
- Application control
- IPS
- URL Filtering
- VPN
- Antivirus
- Cloud-Sandbox...

CloudHive: Micro-Segmentation for Cloud



**One vSOM, Two vSCMs, Up to 200 vSSMs,
One or Multiple vDSM**



Unparalleled live traffic visibility



Reduce the attack surface to near-zero



Effortlessly scale security through active orchestration



Improve efficiency while reducing costs

Centralized Management



HSM/vHSM
Hillstone Security
Management Platform



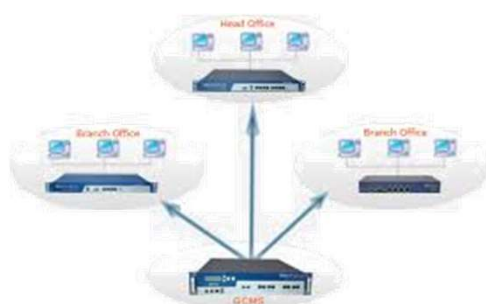
CloudView
Cloud Security Monitoring &
Analytics



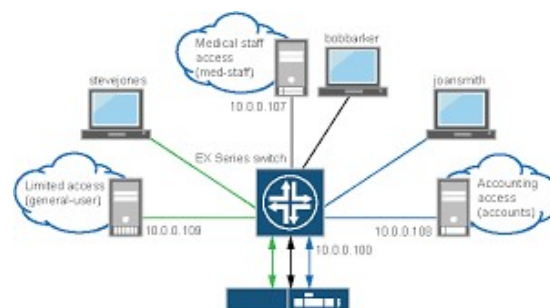
HSA/vHSA
Hillstone Security Audit Platform

HSM: Centralized and Efficient Management

***Hillstone Security Management Platform (HSM)
A Centralized Management, Configuration and Monitoring Solution***



**Centralized
Device Management**



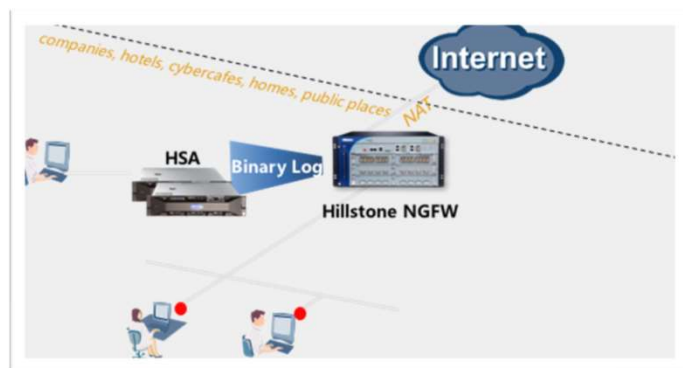
**Centralized
Policy Configuration**



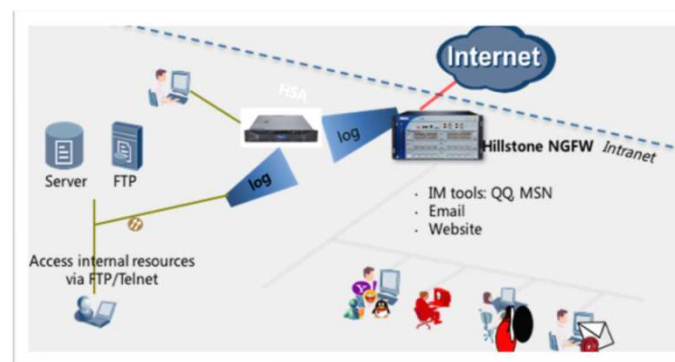
**Centralized
Security Monitoring**

HSA: Take Control of Your Security Posture

Hillstone Security Audit Platform (HSA)
A centralized logging, analytics and reporting solution



Forensics – NAT Tracking



Network Behavior Monitoring

CloudView: Security Management and Analysis Service



Centralized Device Monitoring

- System/threat monitoring
- Device license status and renewal
- Cloud inspection

Threat Analysis and Alarm

- Threat and event logs
- Comprehensive reports
- Real-time message and alarms
- Threat intelligence

Real-time Monitoring

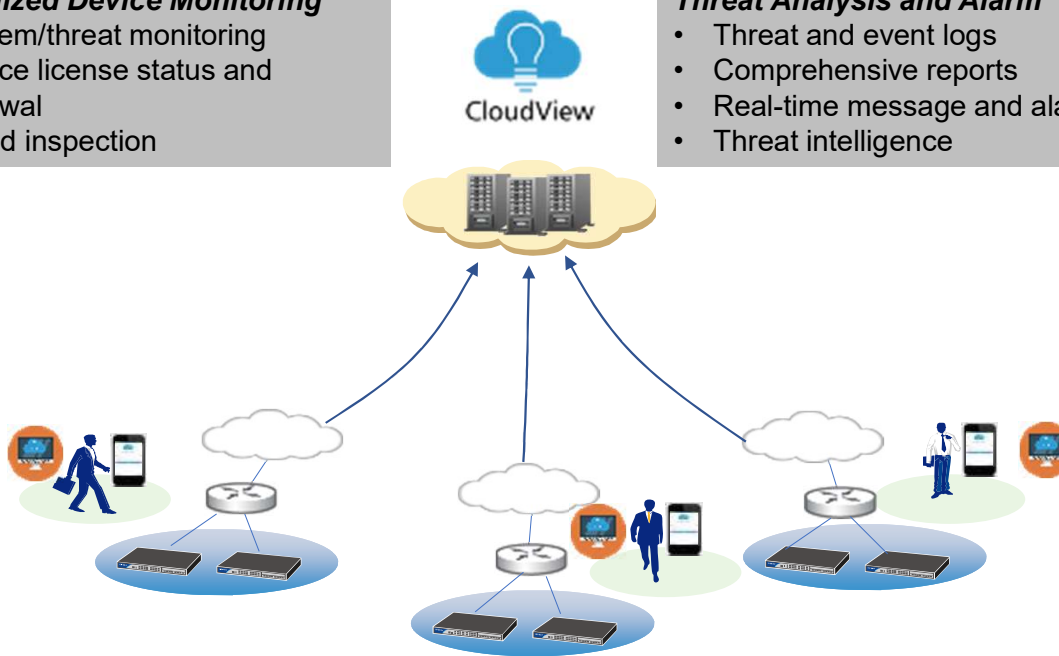
- 24/7 monitoring and alerts
- Threat analysis and reports
- Mobile/web access

Ease of Deployment

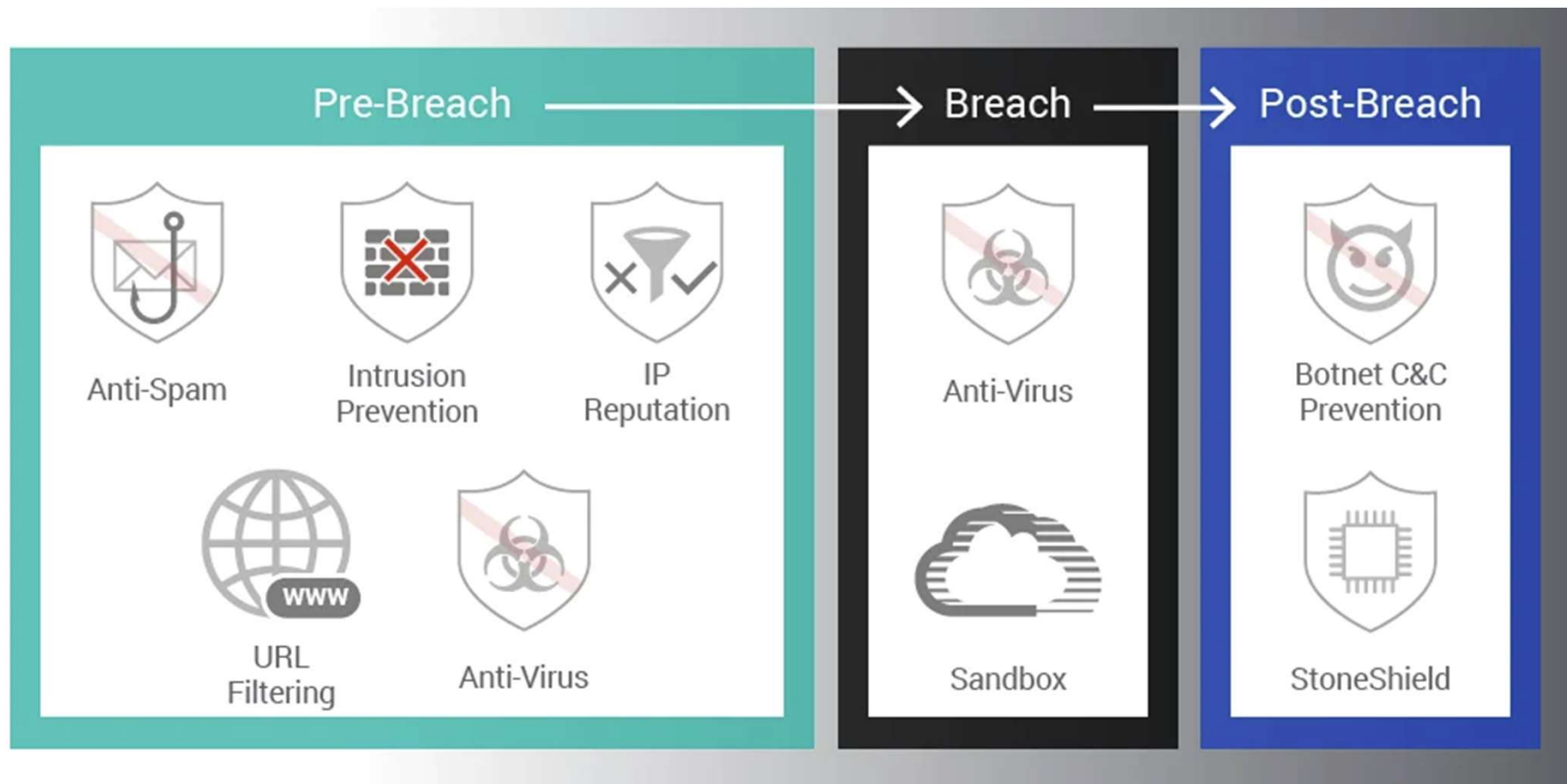
- No deployment required
- No maintenance
- Easy and instant subscription

Low/Flexible Investment Options

- Free to initiate (Includes essential features)
- Pay to subscribe (For advanced features, Professional Version)
- Security as a Service (SaaS)

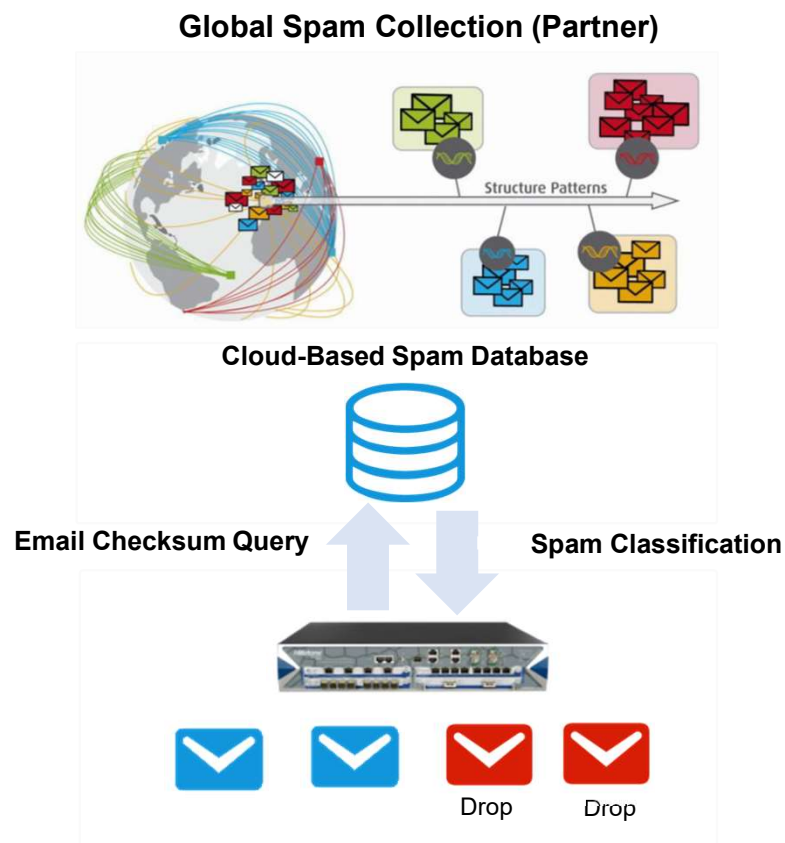


Security Subscription Service



Anti-Spam

- Real-time Spam Classification and Prevention

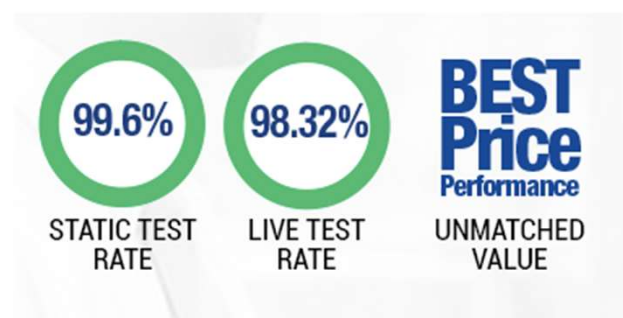


Hillstone Anti-Spam Key Features

- Real-time Spam Classification and Prevention
- Support Spam Classification: Confirmed Spam, Suspected Spam, Bulk Spam, Valid Bulk
- Regardless of the language, format, or content of the message
- Works on both SMTP and POP3 email protocols
- Inbound and outbound detection
- White lists to allow emails from trusted domain

IPS: Unparalleled Protection at the Best Value

- Top IPS **Detection Rate**
 - **99.6%** blocking rate of static exploits from the NSS exploit library
 - **98.32%** blocking of live exploits in NSS lab test



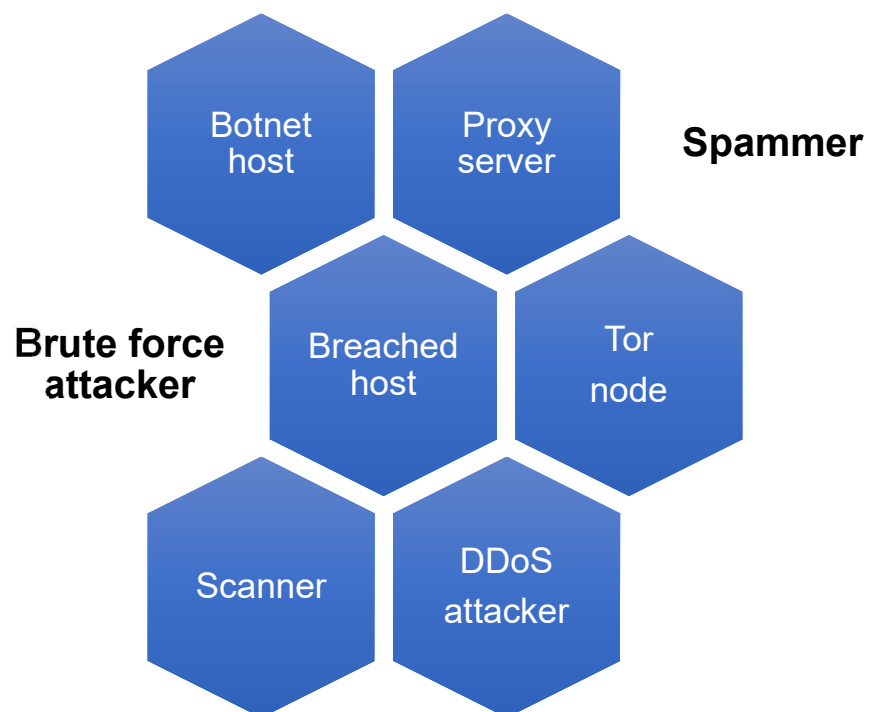
- Lower **False Positives** with a patented **high-performance** detection engine and **advanced threat breeds** offered in conjunction with leading technology partners



IP Reputation

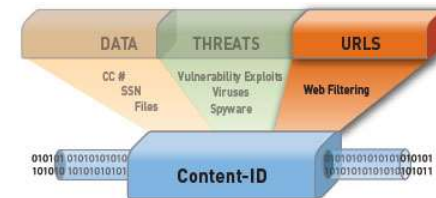
IP Reputation is the threat intelligence classification based on IP.

It evaluates and classifies the risky IPs.



URL Filtering: Dynamic Web Filtering

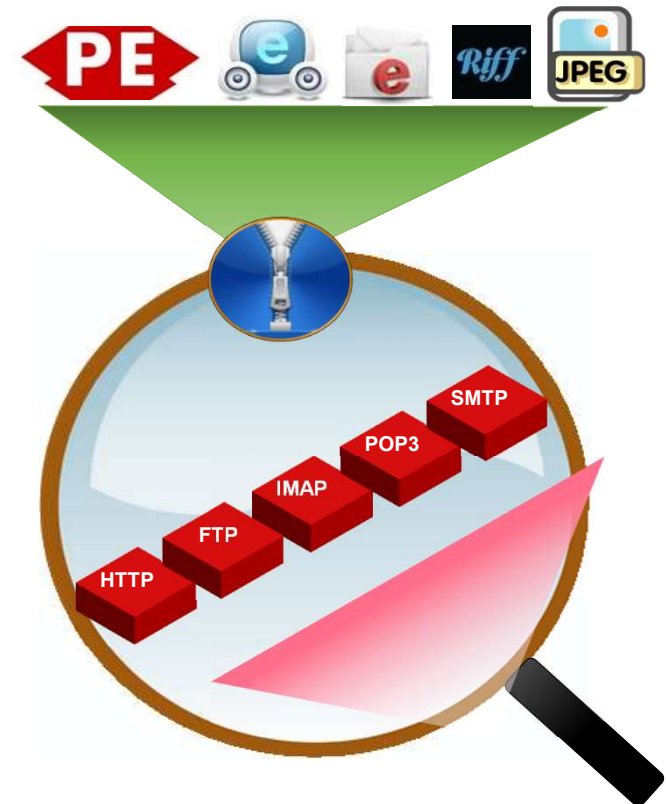
- Flow-based web filtering inspection
- Dynamic web filtering with cloud-based real-time categorization database
- Over 140 million URLs with 64 categories
- Additional web filtering features



| Category List | Blocked Category List |
|------------------------|-------------------------|
| Category | Category |
| Abortion and pregnancy | Adult |
| Actors and models | Chats |
| Ads | Gambling |
| Adult dating | Games and toys |
| Alcohol | Hacking |
| Arts | Music |
| Astrology | Nonsense and time waste |
| Blogs and Forums | Phishing |
| Books or comics | Porn |
| Business and services | Sports |
| Bypass protection | Warez |
| CDN | |
| Celebrity gossip | |
| Classifieds | |
| Clothing | |
| Community and society | |
| Cooking and food | |
| Depress domain | |
| Depress page | |
| Facebook themes | |

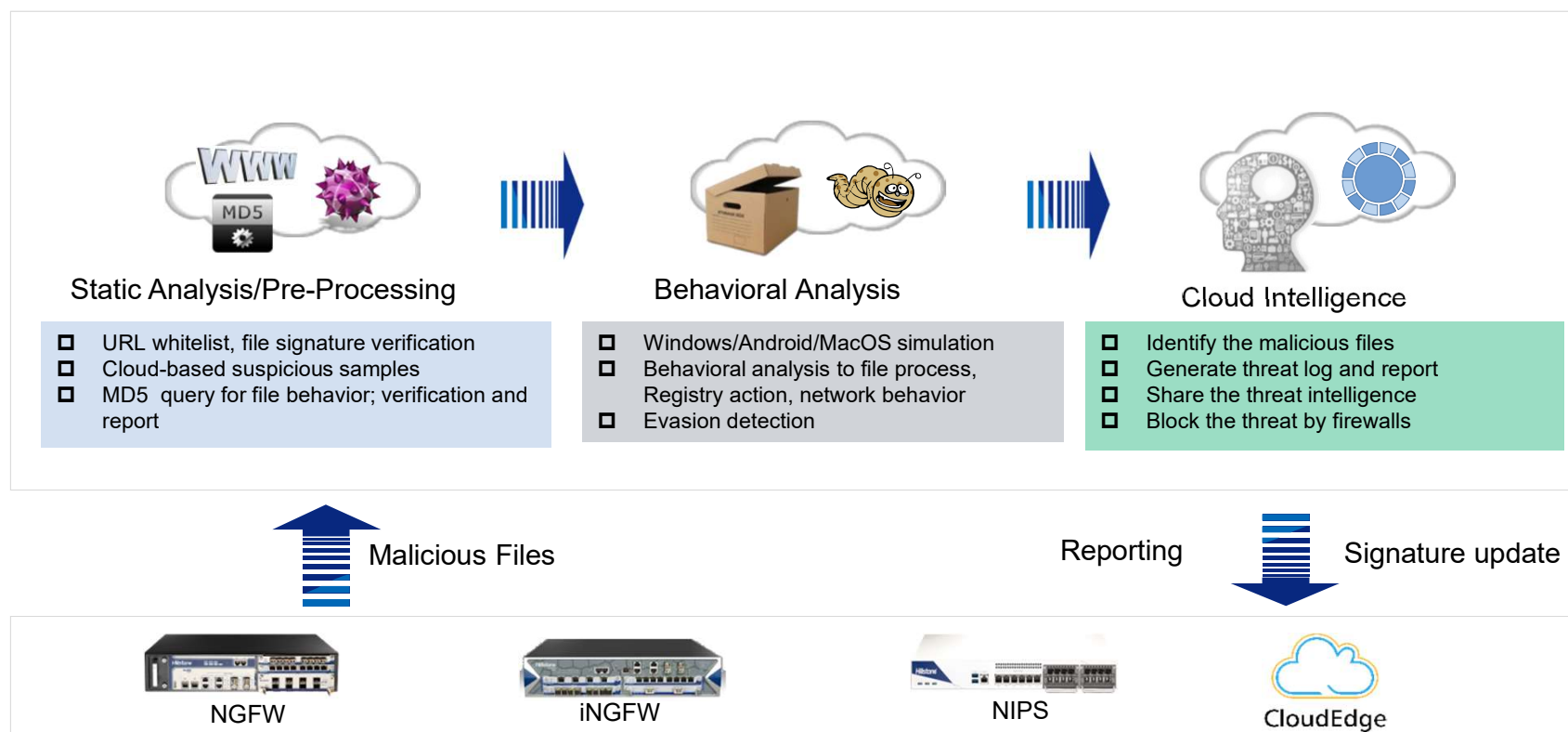
Antivirus: Effectively Detects and Blocks Malwares

- High performance, low latency
- Virus detection on various file transmission protocols: HTTP, HTTPS, SMTP, POP3, FTP, IMAP4
- Virus detection on various file types: **RAR, ZIP, GZIP, BZIP2, TAR**
- Support for **compressed** file virus scanning
- **3.2 million** virus signature library
- Forensics

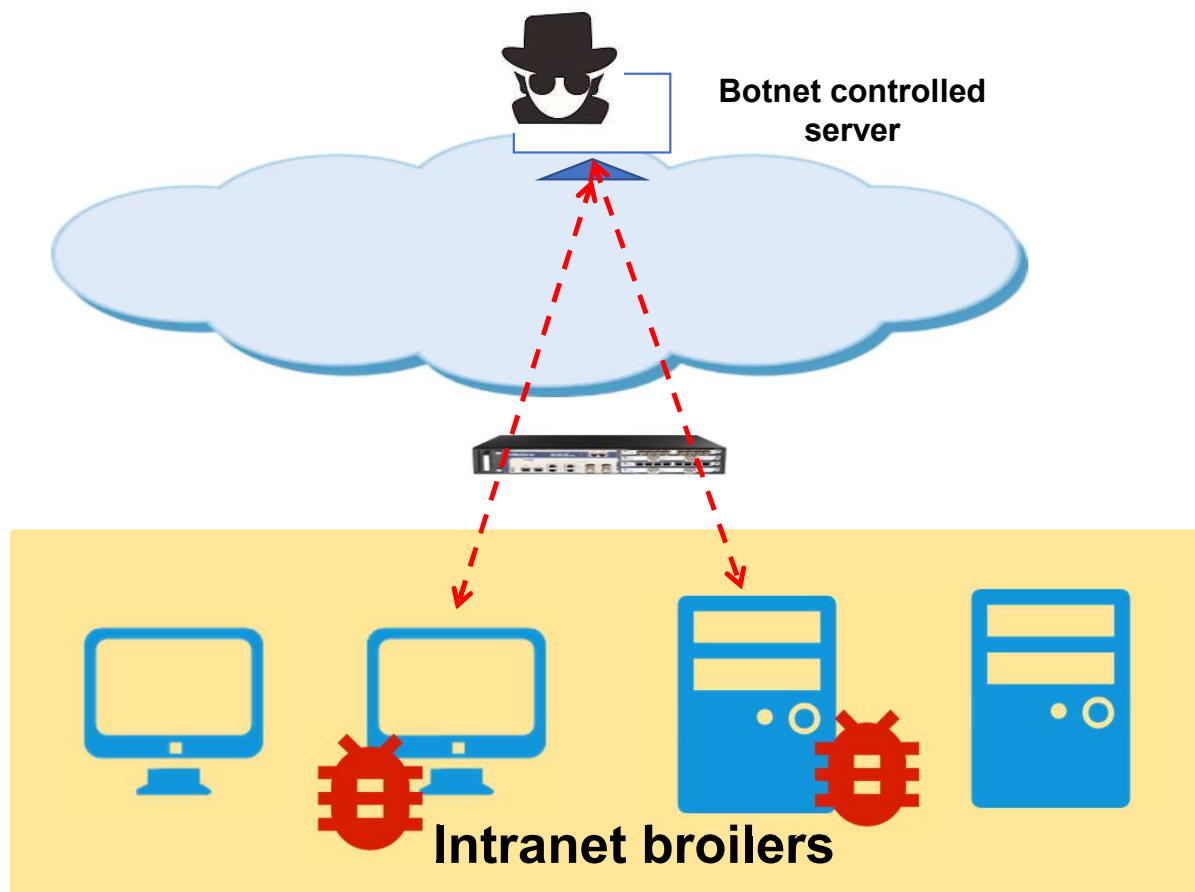


Cloud Sandbox

- Near Real-time Prevention and Cloud Intelligence



Botnet C&C Prevention



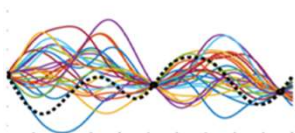
- Effectively discover intranet broilers and prevent further attacks of advanced threats through comparison of information obtained with the C&C address database
- Regular Botnet server address updates
- C&C IP and domain detection methods
- TCP, HTTP, and DNS detection support
- IP and domain whitelist design

Note: Base 5.5R5F2

StoneShield: ABD and ATD

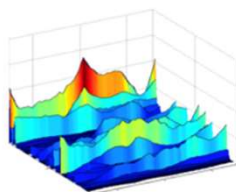
Unique Detection Engine I Abnormal Behavior Detection (ABD) Engine

Behavior Learning & Modeling



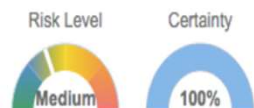
- Host/server behavior modeling by adaptive machine learning
- Layer 4-7, hundreds of behavior dimensions

Abnormal behavior Analysis



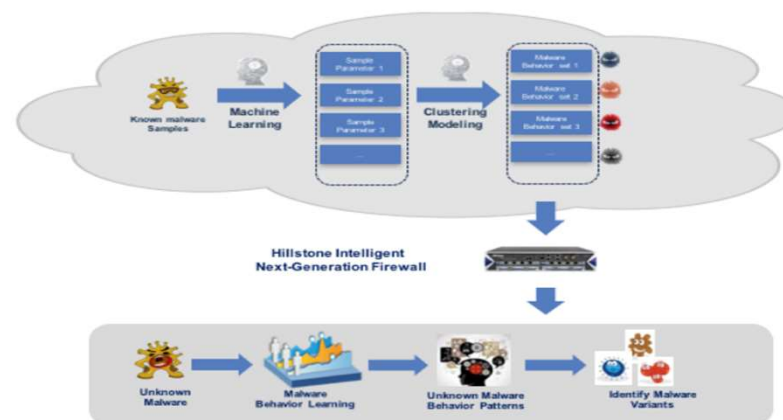
- Real time Behavior Model and rules
- Identify abnormal dimensions by behavior partnering

Threat & Risk Identification



- Quantitate risk severity and certainty by correlation analysis
- Threat forensics including suspicious and relevant PCAP

Unique Detection Engine II Advanced Threat Detection (ATD) Engine



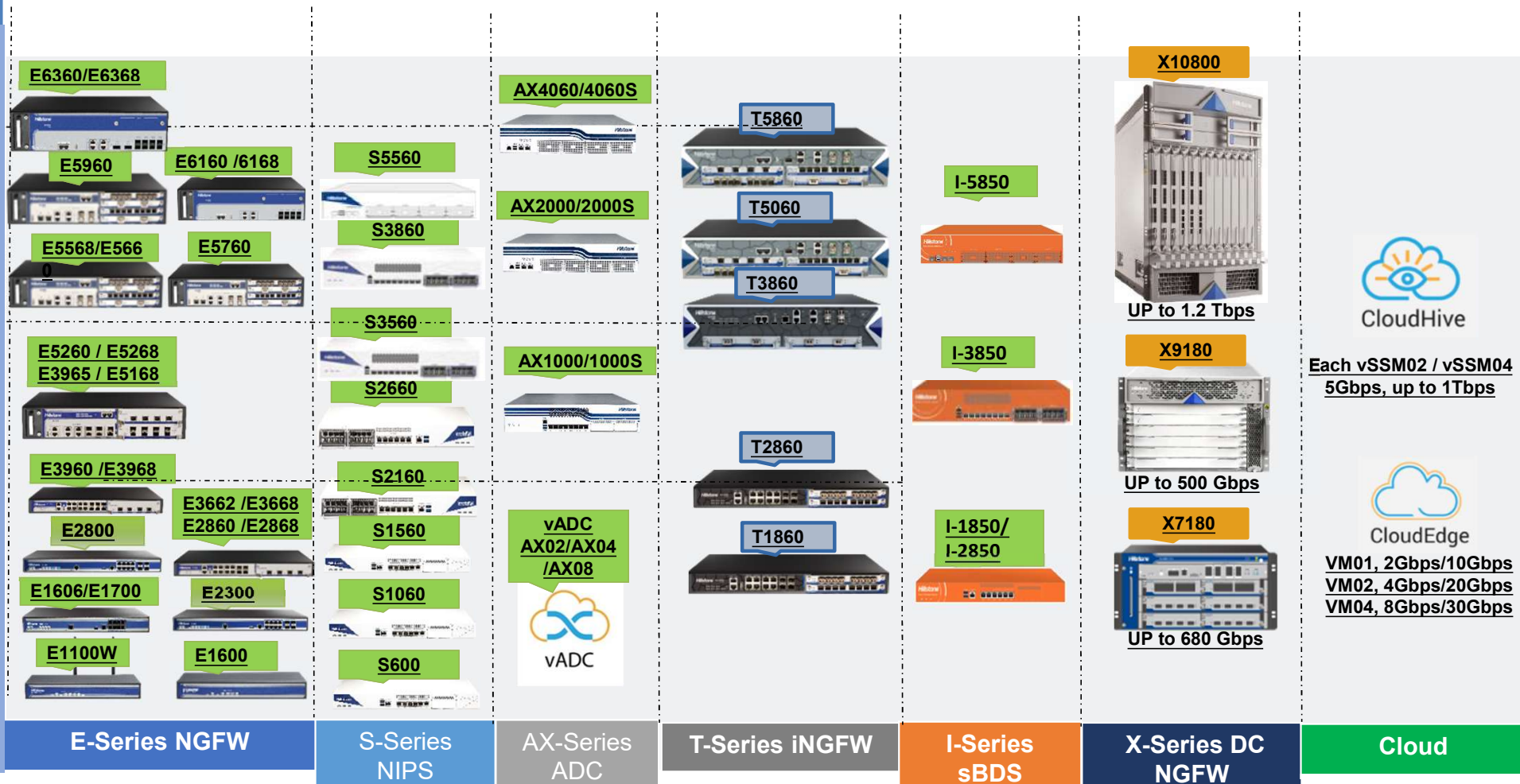
Portfolio: Performance Matrix

80Gbps

20Gbps

10Gbps

1Gbps



Key Technologies and Solutions

Hillstone Key Technologies

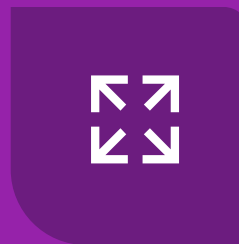
AI-powered Intelligent Breach Prevention

- Abnormal Behavior Detection and Network Traffic Analytics
- Advanced Malware Detection Algorithm
- Advanced Threat Correlation Analytics
- Complete Cyber Kill Chain Mapping



Protect Cloud Data Centers Inside Out

- Terabit Performance and High Scalability
- Innovative Twin-Mode HA
- Unparalleled Visibility into East-West Traffic
- Complete L2~L7 Security Protection



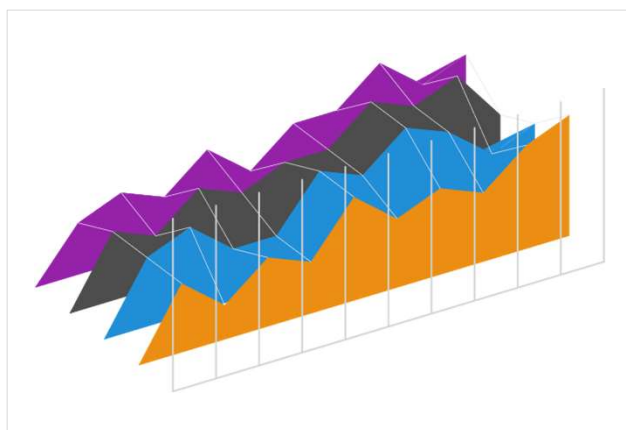
Secure SD-WAN for Distributed Enterprise

- Built on Security Foundations
- Centralized Mgmt. w/ Effortless Provision
- Intelligent Multilink Mgmt. & Optimization
- Seamless & Comprehensive Encryption



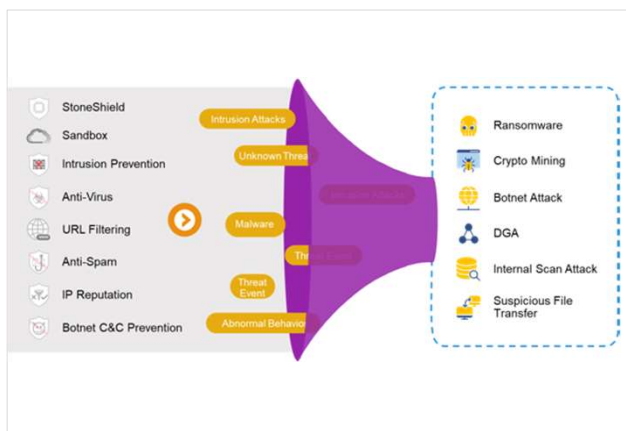
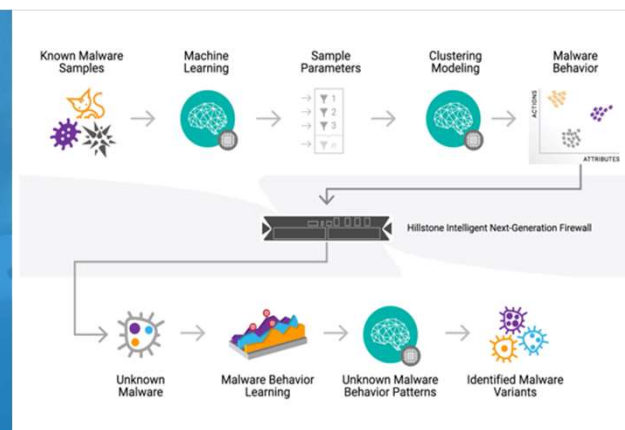
AI-powered Intelligent Breach Prevention

AI-powered Intelligent Breach Prevention



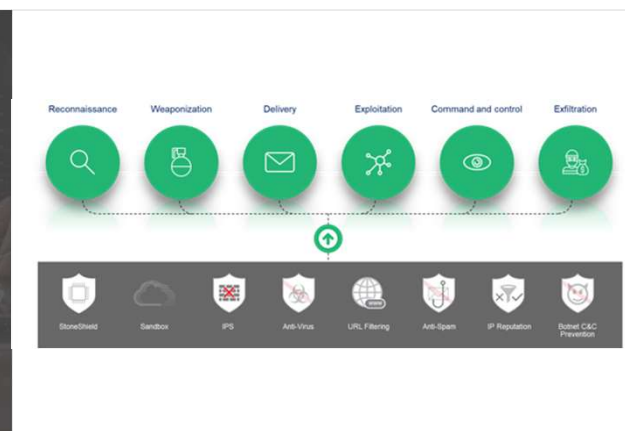
Abnormal Behavior Detection

Unknown Malware Detection



Threat Correlation Analytics

Complete Cyber Kill Chain

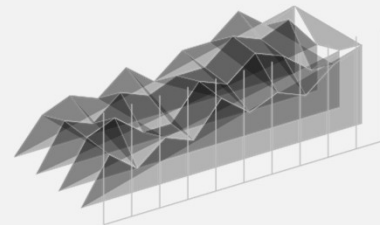


Abnormal Behavior Detection (ABD)



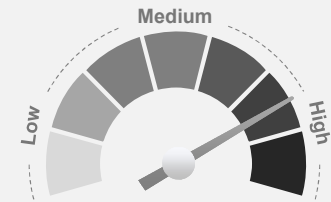
Behavior Learning and Modeling

- Host/server behavior modeling by adaptive machine learning
- Layer 4-7, hundreds of behavior dimensions



Abnormal Behavior Analytics

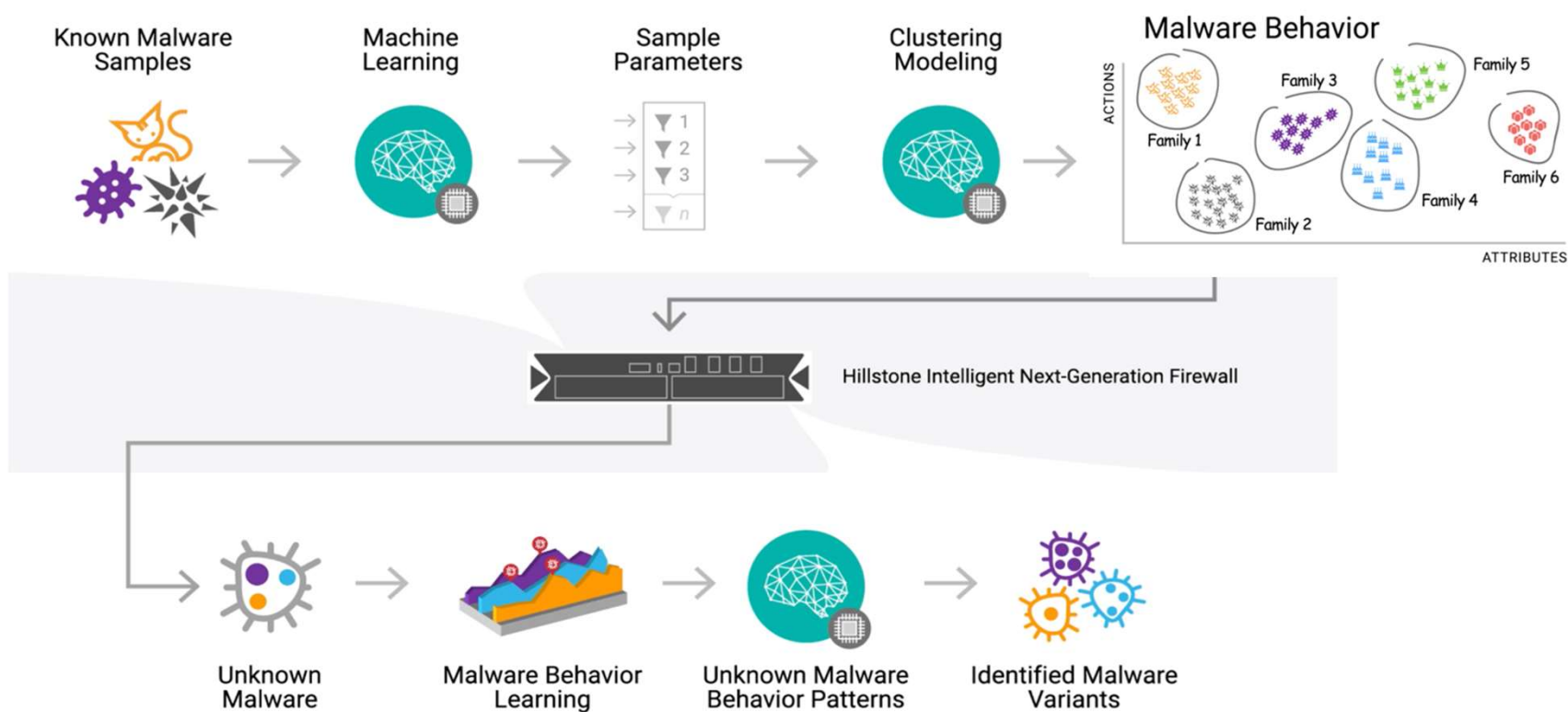
- Real time Behavior Model and rules
- Identify abnormal dimensions by behavior partnering



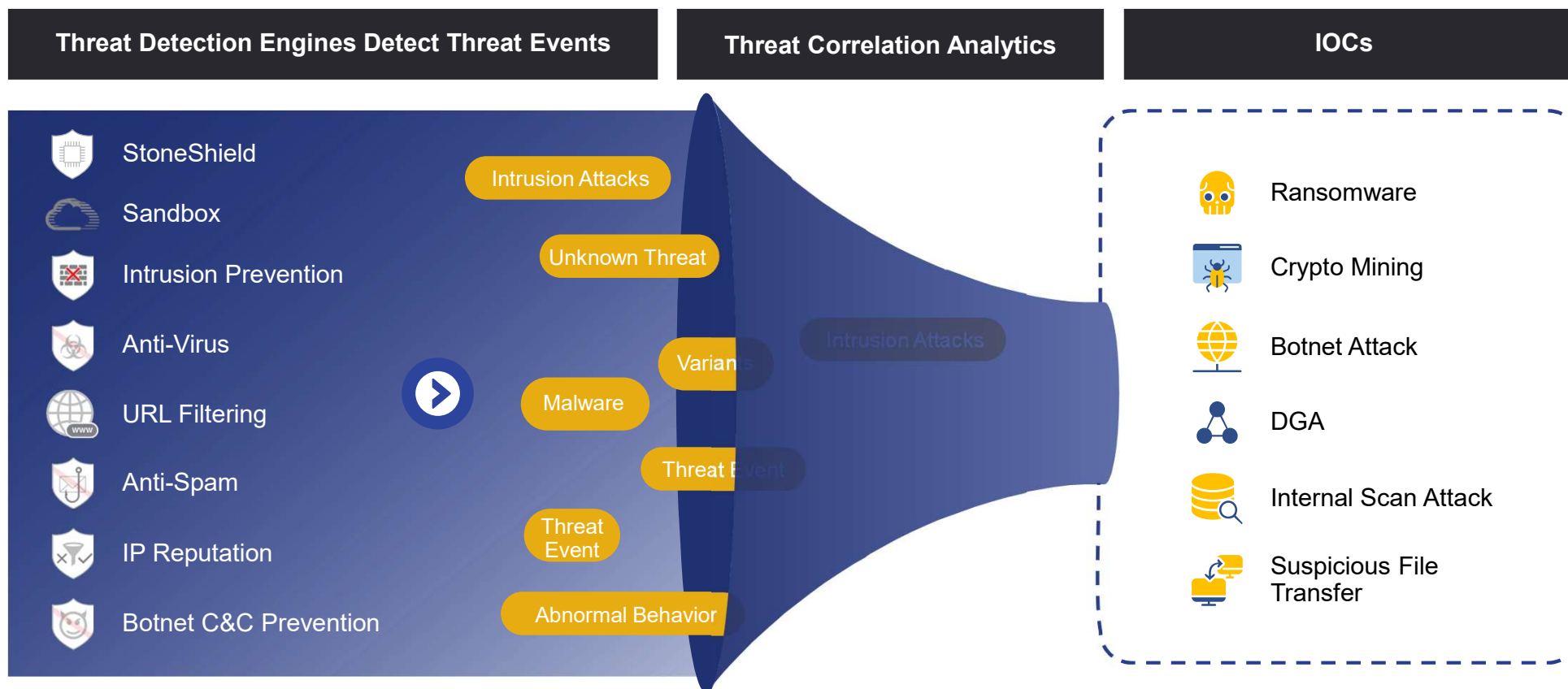
Threat and Risk Identification

- Quantitate risk severity and certainty by correlation analysis
- Threat forensics including suspicious and relevant PCAP

Advanced Threat Detection (ATD)



Indicator of Compromises (IOCs)



Complete Kill Chain Detection

Reconnaissance

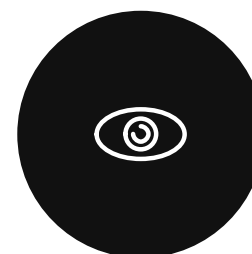
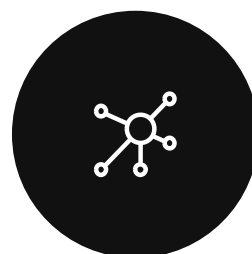
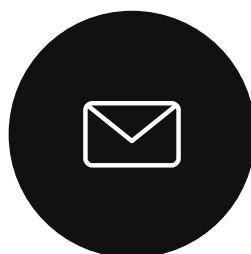
Weaponization

Delivery

Exploitation

Command and control

Exfiltration



StoneShield



Sandbox



IPS



Anti-Virus



URL Filtering



Anti-Spam



IP Reputation



Botnet C&C
Prevention

Hillstone Intelligent Breach Prevention Offerings

Hillstone NGFW



Comprehensive Threat Detection and Prevention with Granular App Control

6 Years

in Gartner Magic Quadrants for Enterprise Network Firewalls

Hillstone sBDS



Detects Advanced Threats Targeting Critical Servers and Hosts

Representative Vendor in

Gartner Market Guide for NTA

Hillstone NIPS



Intrusion Detection and Prevention with Best Efficacy and Performance

Representative Vendor in

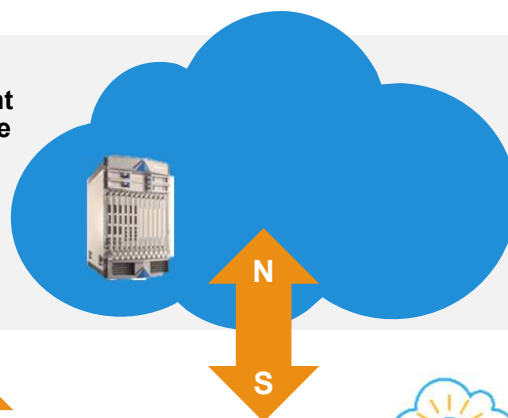
Gartner Market Guide for IDPS


Protect Cloud Data Centers Inside Intelligence 2 Out

Protect the Cloud Data Center Inside Out



- ▶ Fully Distributed SW Architecture
- ▶ Fully Redundant HW Architecture
- ▶ Innovative Twin-mode HA for Modern Data Centers
- ▶ Complete Security Features






CloudEdge

Protect Each VPC

Public Cloud

Integrate with NFV

Private Cloud







CloudHive

Protect VMs with Micro-segmentation

Private Cloud



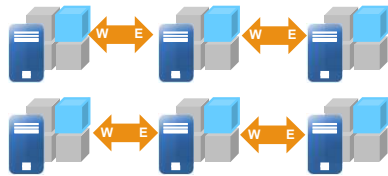




VPC





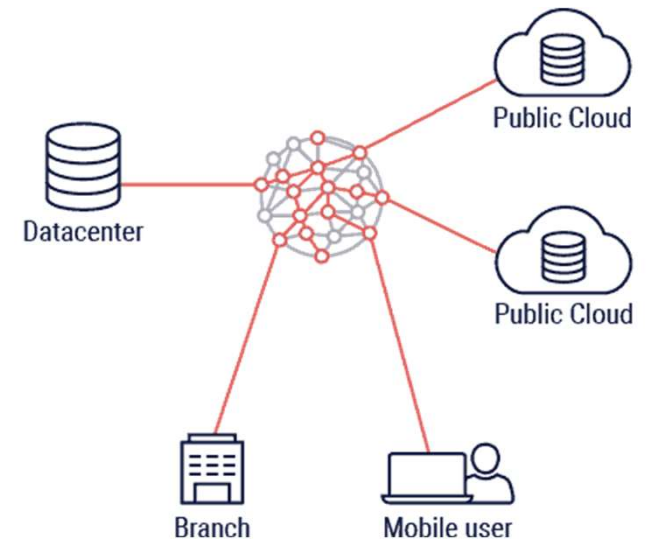

NFV



Security Challenges in Data Center Perimeter

- Will firewalls become the bottleneck for network performance?
- How do you secure applications running in the data center?
- How do you guarantee secure remote access?
- Can security easily scale up with the need for more performance?



Future Proofed Architecture for Data Center Perimeter Protection



X-Series

500Gbps ~ 1Tbps



**Fully Distributed
SW Architecture**



**Fully Redundant
HW Architecture**

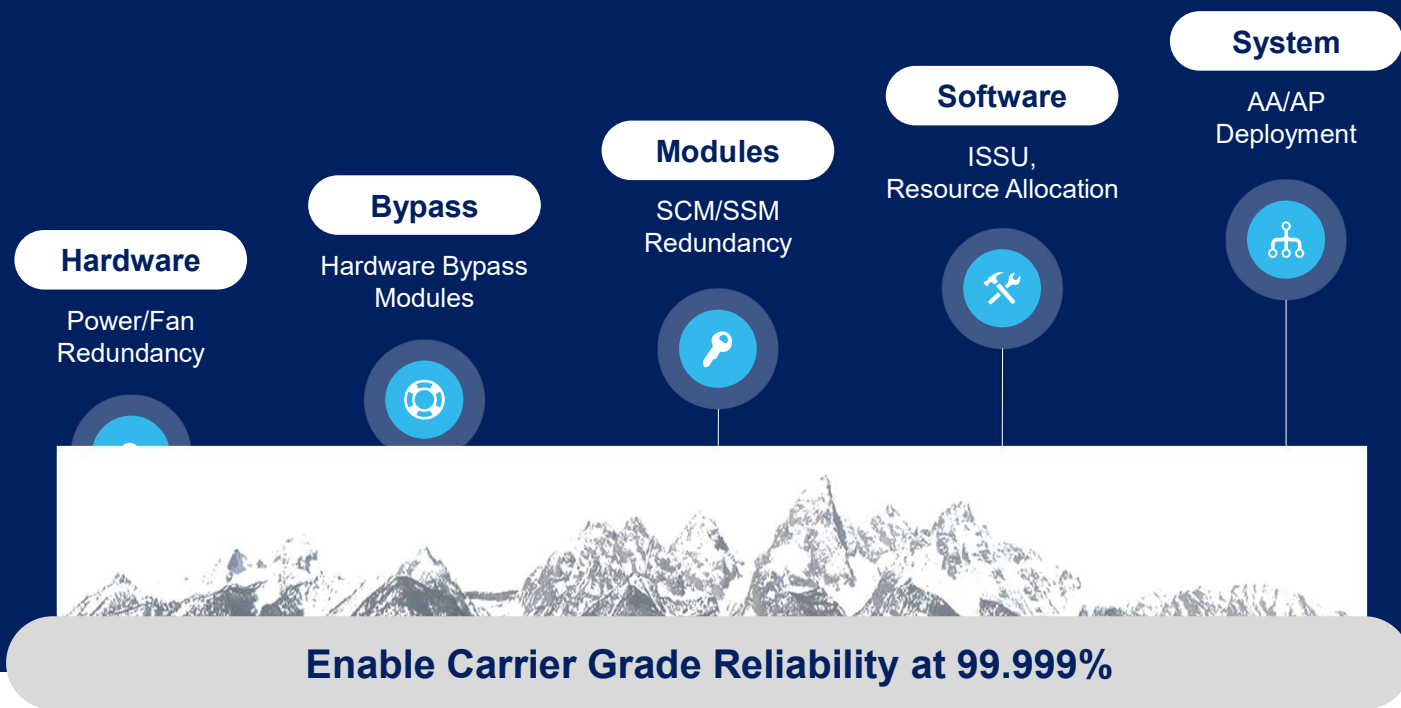


**Innovative
Twin-mode HA for
Redundant Data
Centers**



**Complete L2-L7
Security Features**

Carrier Grade High Reliability



Hillstone X-Series Value Proposition

Guaranteed business continuity of modern data centers



Security scales up with performance growth



Complete L2~L7 security protection



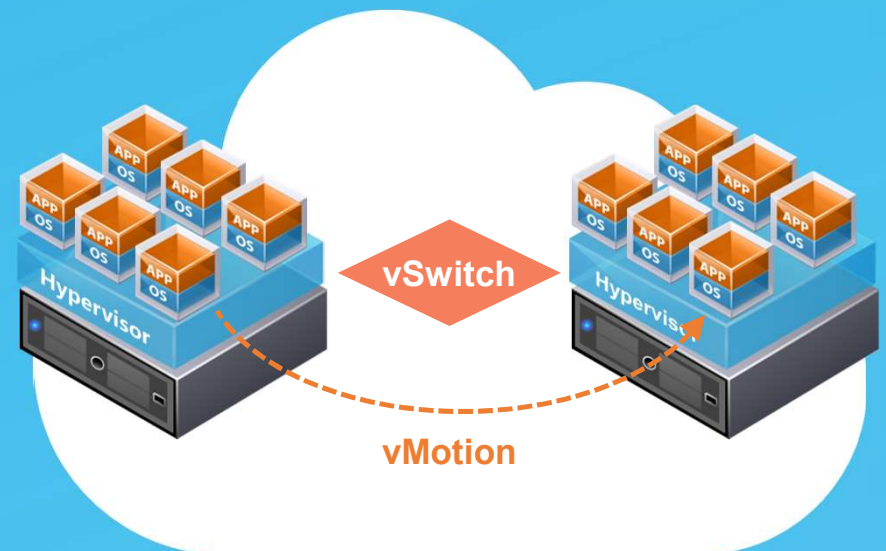
Energy Efficiency



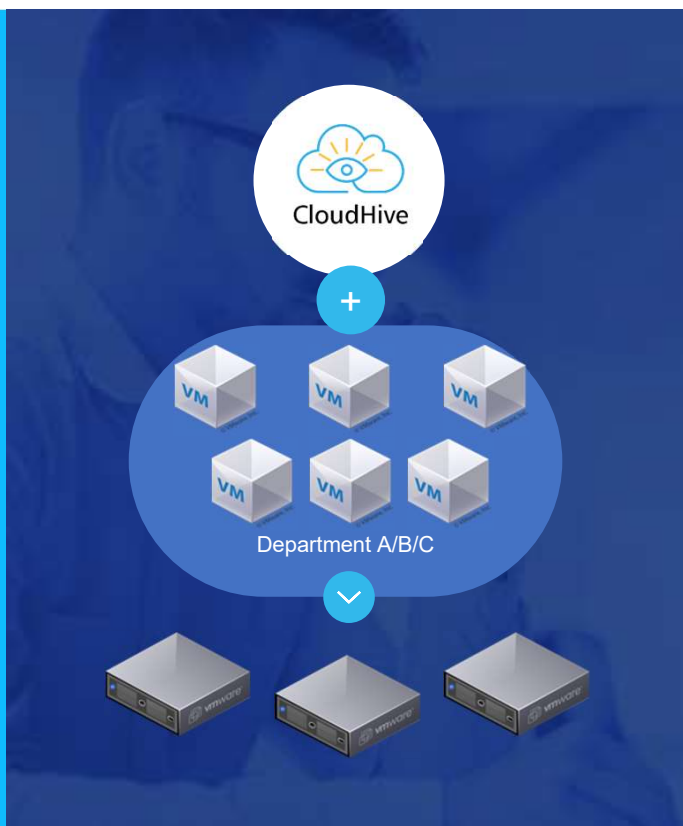
Security Challenges inside Data Center

Large amounts of VMs
Vanishing perimeters
VMs move frequently

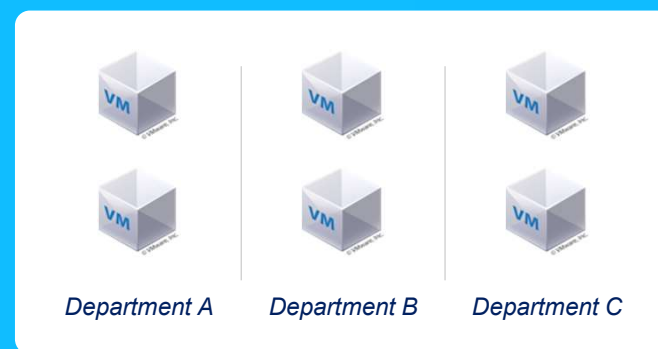
- Need east-west traffic visibility.
- How to protect lateral movement?
- Can security scale easily inside the cloud?



Micro-Segmentation for Virtualized Data Center



Logical Segmentation



Segment applications between different departments without physical/logical network changes

Comprehensive Protection

Application Control

3000+
Application
identification



Intrusion Prevention

8000+
IPS signatures



Antivirus

Real-time Updated
Virus and malware
detection



Network Attack Defense

Attack Defense
Anti-DoS/DDoS,
protocol anomaly



User Control

Authentication
Combined with AD
authentication account



VM/Port Group Protection

Automatic IP address
change



URL Filtering

140+ Million
Dynamic URL filtering



Firewall

Application policies,
NAT, DNS, VPN, etc.

Recognized by Industry Analysts

Hillstone CloudHive



Protects Each VM with
Comprehensive East-West Traffic
Visibility

Representative Vendor in
Gartner Market Guide for CWPP

Gartner

Market Guide for Cloud Workload Protection Platforms

Published 14 April 2020 - ID G00716192 - 33 min read

Protection requirements for cloud-native applications are evolving and span virtual machines, containers and serverless workloads in public and private clouds. Security and risk management leaders must address the unique and dynamic security requirements of hybrid cloud workloads.

Overview

Key Findings

- Enterprises using endpoint protection platform (EPP) offerings designed solely for protecting end-user devices (e.g., desktops,

Hillstone CloudHive Value Proposition

Unparalleled live traffic visibility



Fine grained protection for virtualized workload



Effortlessly scale security through active orchestration



Improved efficiency while reducing TCO



Secure SD-WAN for Distributed Enterprise

Hillstone Integrates SD-WAN with Security

Centralized Management and Analysis

Zero-Touch Provisioning

Seamless Encryption



VPN



LLB



iQoS



APP/User
Identification



HA



Access
Control



StoneShield



Sandbox



IPS



Anti-Virus



URL Filtering



Anti-Spam



IP Reputation



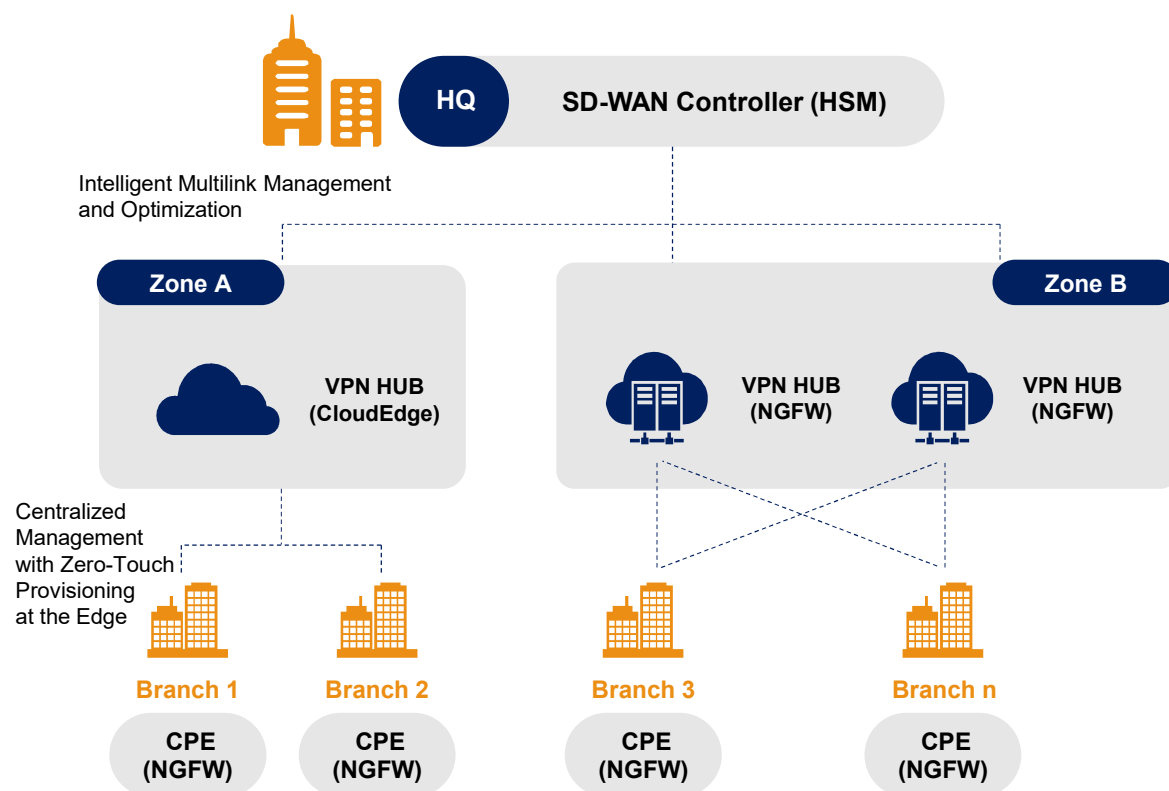
Botnet C&C
Prevention

HSM

Secure
SD-WAN

NGFW

Secure SD-WAN for Distributed Enterprises



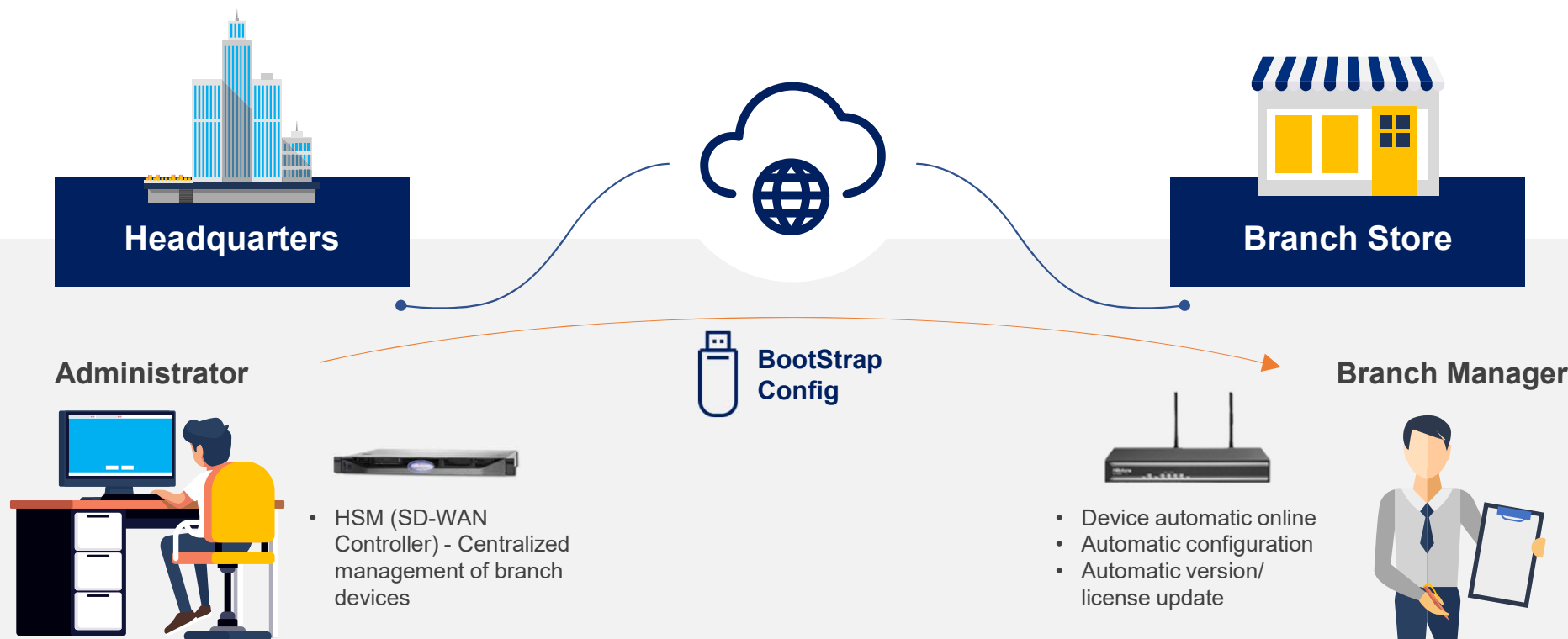
Solution Highlights

- Zero-Touch Provisioning
- Seamless and Comprehensive Encryption
- Award-Winning Enterprise-Grade Security Foundation
- Centralized Management and Analysis

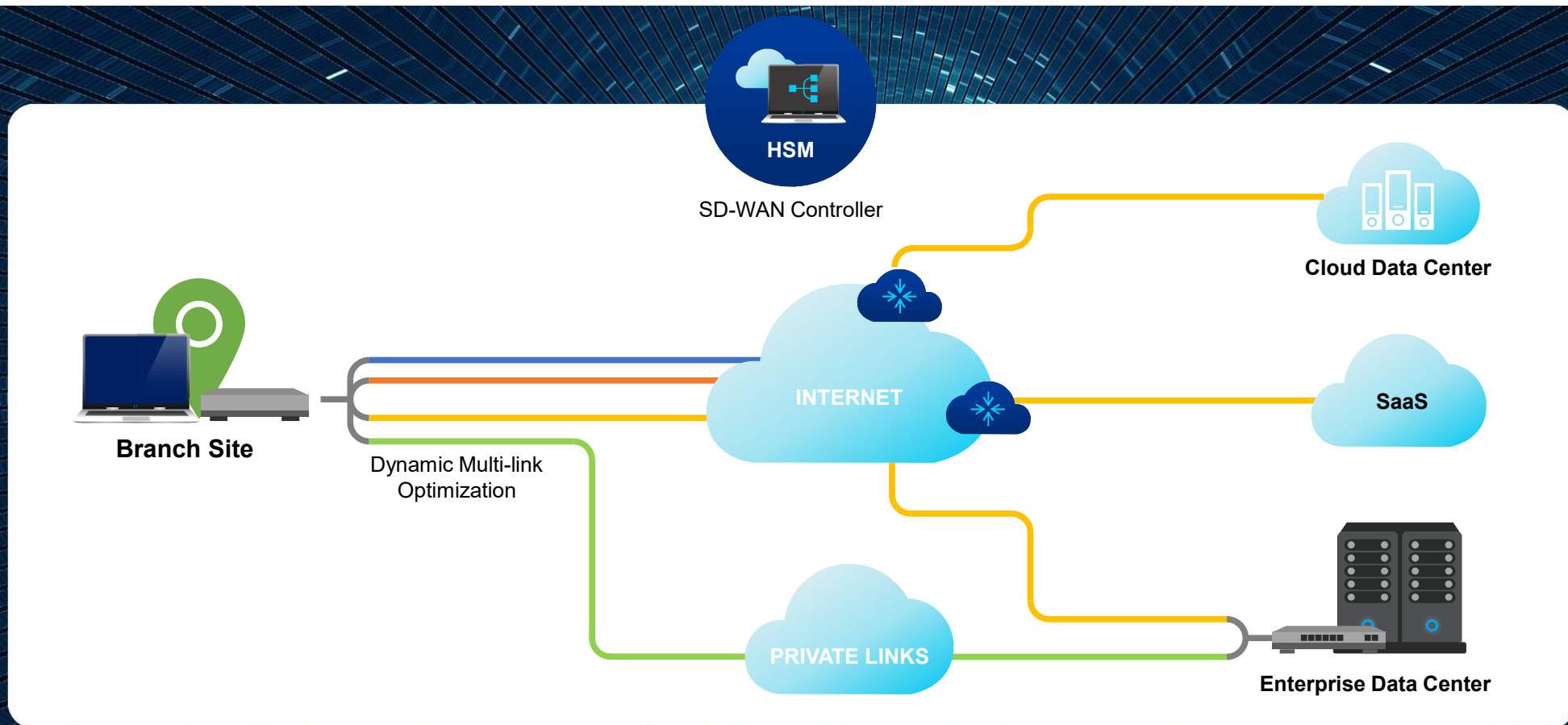
Value Propositions

- Fast and flexible business launch
- Efficient operation enabled by automation
- End-to-end security protection
- Greatly reduced cost with limited maintenance needs

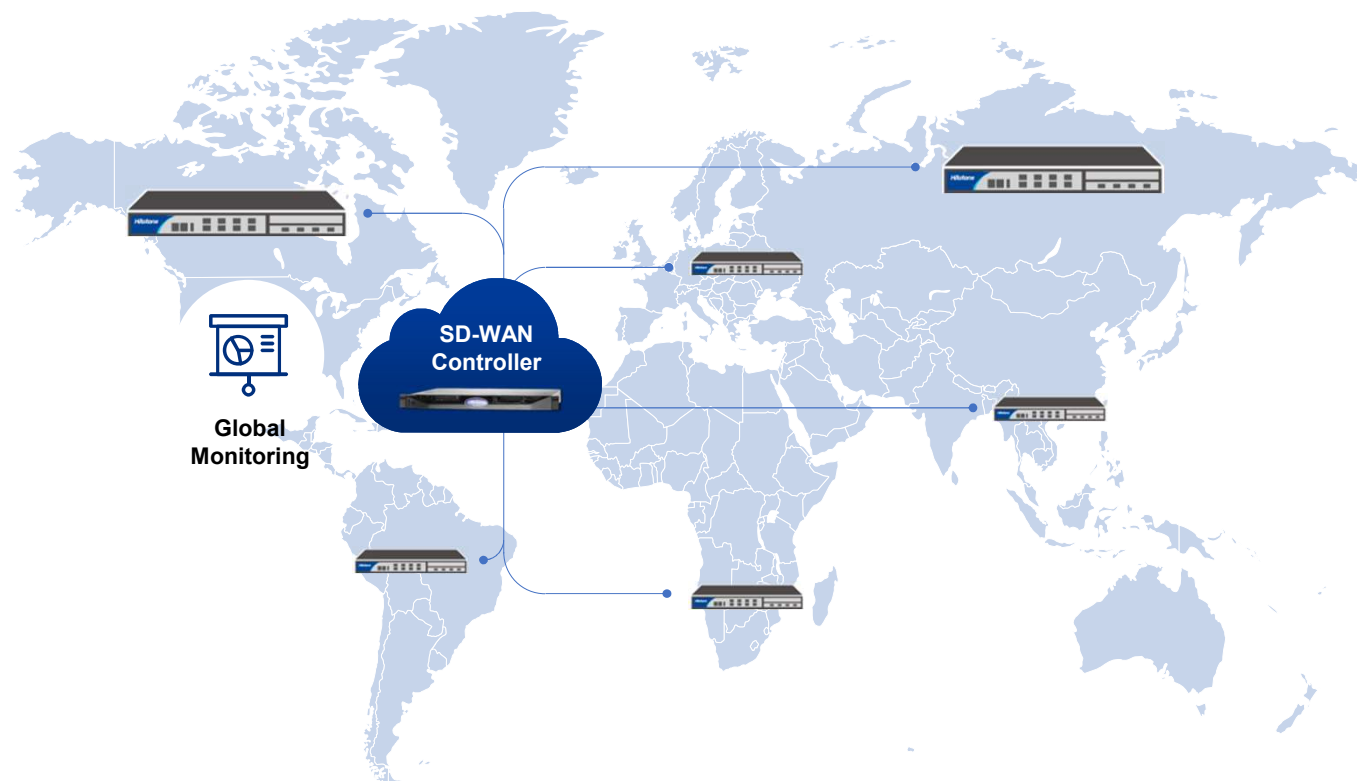
Zero Touch Provisioning Simplifies Branch Onboarding



VPN over Multiple Links with Intelligent Routing



Centralized Management and Monitoring



Centralized

**VPN Network
Deployment**

**Security Policy
Management**

**Monitoring of
Devices and Links**

Comprehensive Protection

Application Control



3000+ Application identification

Intrusion Prevention



8000+ IPS signatures

Antivirus



Real-time Updated

Virus and malware detection

Network Attack Defense



Attack Defense

Anti-DoS/DDoS, protocol anomaly



User Control



Authentication Combined with AD authentication account

VM/Port Group Protection



Automatic IP address change



URL Filtering



140+ Million Dynamic URL filtering

Anti-Spam



SMTP & POP3

Real-time classification and prevention

Sandbox



Multiple protocols & file types

Complete behavior analysis

Firewall

Hillstone Secure SD-WAN Highlights

Zero Touch Provisioning

- No branch IT support needed

Multiple Links

- 3G, 4G LTE, 5G, Broadband, DSL, etc.

Intelligent Routing

- Policy-based routing
- Application-based routing
- Automated failover

Centralized Management

- VPN network
- Security policies

Natively Secure

- Complete security - Firewall, URL Filtering, AD, AV, IPS, etc.

Fast and flexible
business launch



Greatly reduced
cost with limited
maintenance
needs



Hillstone Secure SD- WAN Value Propositions

End-to-end
security protection



Efficient operation
enabled by
automation



Security that Works!

Hillstone
NETWORKS

+1 408 508 6750

inquiry@hillstonenet.com

5201 Great America Pkwy, #420

Santa Clara, CA 95054

www.hillstonenet.com

