



# How to delete static routes using the Command Line Interface

🕒 03/26/2020

👍 9 People found this article helpful

👁️ 76,641 Views

## Description

How to delete static routes using the Command Line Interface

## Resolution

### Feature:

This article describes the method to delete static routes in SonicWall UTM devices using the Command Line Interface (CLI). This would be handy in situations where a user has lost access to the SonicWall Management GUI due to an incorrect route .

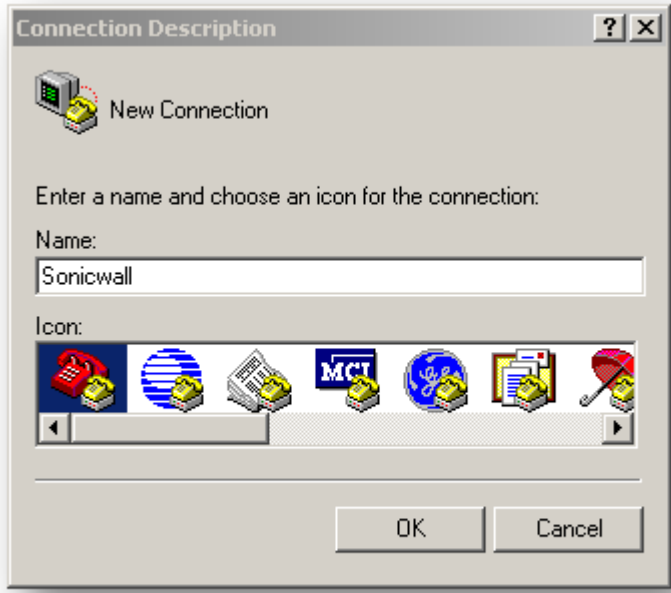
### Procedure:

- Connect the console cable to SonicWall and a PC.
- Open a Terminal Emulation Software like *HyperTerminal* or *Putty*.
- Configure the following parameters to login to the SonicWall CLI:
  - Bit per second: 115200
  - Data bits: 8
  - Parity: None
  - Stop bits: 1
  - Flow control: None



- Enter the following commands to delete the incorrect route:
  - **config** *(this is to enter the configuration mode)*
  - **route static** *(this is to enter the static route mode)*
  - **show route** *(this is done to get the route-handle of the incorrect route)*
  - **delete** <Route Handle> *(this command will delete the incorrect route)*
  - **exit** *(enter this command to exit the menu and apply changes)*

**Note:** The above commands cannot delete default auto-configured routes.





COM1 Properties [?] [X]

Port Settings

Bits per second: 115200

Data bits: 8

Parity: None

Stop bits: 1

Flow control: None

Restore Defaults

OK Cancel Apply

The image shows a Windows-style dialog box titled "COM1 Properties". It has a "Port Settings" tab selected. Inside the dialog, there are five dropdown menus: "Bits per second" set to 115200, "Data bits" set to 8, "Parity" set to None, "Stop bits" set to 1, and "Flow control" set to None. Below these settings is a "Restore Defaults" button. At the bottom of the dialog are three buttons: "OK", "Cancel", and "Apply".



User:admin  
Password:

NSA 4500> config  
(config[NSA 4500])> route static ←  
(config-Static-Route[NSA 4500])> show route ←

Handle	Active	Source	Metric	Priority	Destination	Service	Gatewa
y	Interface						
2	Yes	Any			255.255.255.255/32	Any	0.0.0.
0	X0 (LAN)	20	1				
4	Yes	Any			X1 Default Gateway	Any	0.0.0.
0	X1 (WAN)	20	2				
8	Yes	Any			X0 Subnet	Any	192.16
0	8.168.168X0 (LAN)	1	3				
1	Yes	Any			X0 Subnet	Any	0.0.0.
0	X0 (LAN)	20	4				
3	Yes	Any			X1 Subnet	Any	0.0.0.
0	X1 (WAN)	20	5				
6	Yes	Any			X3 Subnet	Any	0.0.0.
0	X3 (WLAN)	20	6				
5	Yes	X1 IP			Any	Any	192.16
0	8.170.2X1 (WAN)	20	7				

(config-Static-Route[NSA 4500])> help ←

abort	Exit to toplevel menu and cancel changes where needed
add	Add a Static Routing Policy.
delete	Delete a Static Routing Policy. ←
exit	Exit menu and apply changes
finished	Exit to toplevel menu and apply changes where needed
modify	Modify a Static Routing Policy.
show	Invoke show commands

(config-Static-Route[NSA 4500])> delete 8 ←  
Static Route Policy successfully deleted.  
(config-Static-Route[NSA 4500])> exit ←  
(config[NSA 4500])> end ←  
NSA 4500> \_